

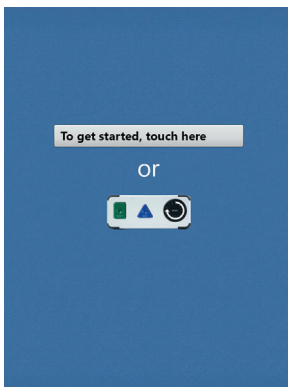
mark and print your ballot



- ▶ The ballot marking device is touch screen operated
- ▶ Accessible features and audio are also available
- ▶ Follow the instructions on the screen to mark and print your ballot
- ▶ Your ballot will print on the attached printer

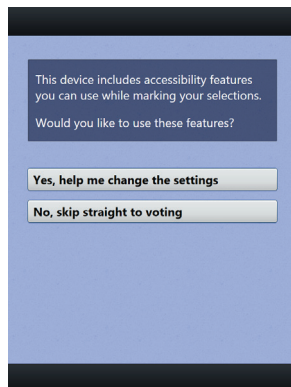
1

Select **To get started, touch here.**



2

If you'd like to use audio/accessible features, you may choose to do so now.



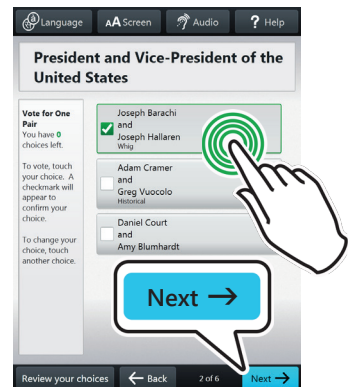
3

When ready, select **Begin Voting.**



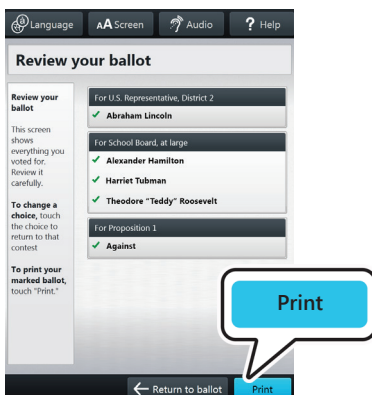
4

Select your choice; select **Next** to go to the next contest.



5

Review your ballot. When you're ready, select **Print.**



6

Retrieve your printed ballot and take all sheets to the ballot box station. **Cast** your ballot in the correct ballot box.

