

Yolo County California Voter's Choice Act Election Administration Plan



Section 3: Appendix

Table of Contents for Appendix

Appendix A		Language Requirements.....	29
Appendix B		Proposed Vote Centers and Ballot Drop Boxes.....	31
Appendix C		Vote Center Facility Layouts.....	38
Appendix D		Voting Accessibility and Language Accessibility Advisory Committees.....	52
Appendix E		Community Partners and Events.....	55
Appendix F		Media Partners.....	60
Appendix G		Direct-to-Voter Contact Materials.....	63
Appendix H		Maps and Spatial Data.....	75
Appendix I		Public Comments.....	100
Appendix J		Sample Emergency Response Plan.....	121
Appendix K		Mutual Aid MOU.....	143
Appendix L		Acronyms and Glossary.....	148
Appendix M		Legislation and Code Citations.....	159

Yolo County
California Voter's Choice Act
Election Administration Plan



Appendix A | Language Requirements

There are currently no federal mandates under Section 203 of the federal Voting Rights Act to provide election materials in languages other than English in Yolo County.

The State of California no longer requires Yolo County to provide the following:

Table 10 Former Language Requirements

Language	Legal Authority	Services and Materials
Chinese	CA EC §14201	Bilingual Assistance and Facsimile Ballots
Korean	CA EC §14201	Bilingual Assistance and Facsimile Ballots
Punjabi	CA EC §14201	Bilingual Assistance and Facsimile Ballots
Russian	CA EC §14201	Bilingual Assistance and Facsimile Ballots
Spanish	CA EC §14201	Bilingual Assistance and Facsimile Ballots

While not a legal requirement, Yolo County Elections provides bilingual assistance and facsimile ballots in the above languages to provide more private and independent accessible options for our voters.

Proposed Vote
Centers & Ballot
Drop Boxes

*EAP Appendix B
Amended Draft*

Yolo County California Voter's Choice Act Election Administration Plan



Appendix B | Proposed Vote Centers and Ballot Drop Boxes

Vote Centers (VCs) and Ballot Drop Box (BDB) locations and hours are subject to change, based on the availability of the location host.

VC and BDB Locations

EC §§4005(a)(10)(I)(vi)(III) and 4005(a)(10)(I)(vi)(IV)

Table 11 Proposed Vote Centers

Vote Centers	Status as of 1/27/2022
Davis	
UC Davis ARC Ballroom A & B 760 Orchard Rd., Davis	Confirmed
Veterans Memorial Center – MPR 203 East Fourteenth St., Davis	Confirmed (11-day VC)
Montgomery Elementary School – MPR 1440 Danbury St., Davis	Confirmed
Emerson Junior High School – MPR 2121 Calaveras Ave., Davis	Confirmed
Esparto	
Esparto Community Center 17020 Yolo Ave., Esparto	Accessibility survey in January 2022
West Sacramento	
Bridgeway Lakes Boathouse 3650 Southport Pkwy., West Sacramento	Confirmed
Virtual Academy – Gym 1100 Clarendon St., West Sacramento	Waiting for confirmation (11-day VC)
Bryte CCT - Bryte Café 637 Todhunter Ave., West Sacramento	Waiting for confirmation
Winters	
Public Safety Facility – EOC Training Room 702 W. Main St., Winters	Confirmed
Woodland	
Yolo County Admin Building – Room 106 625 Court St., Woodland	Confirmed (11-day VC)
Woodland High School – Gym 21 N. West St. Woodland	Confirmed
Pioneer High School – Cafeteria 1400 Pioneer Ave., Woodland	Confirmed
Woodland Community & Senior Center – Banquet Room 3 2001 East St., Woodland	Confirmed

Table 12 Proposed Ballot Drop Box Locations

Ballot Drop Box Location	Status as of 1/27/2022
Clarksburg	
Clarksburg Library 52915 Netherlands Ave., Clarksburg	Exterior – 24/7 – Confirmed
Davis	
Davis City Hall 23 Russell Blvd., Davis	Exterior – 24/7 – Confirmed
Westlake Market 1260 Lake Blvd., Davis	Waiting for a response
Nugget Markets (Mace) 409 Mace Blvd., Davis	Confirmed
Nugget Markets (E. Covell) 1414 E. Covell Blvd., Davis	Confirmed
UC Davis – Location TBD	Exterior – 24/7- Pending
Esparto	
Esparto Regional Library 17065 Yolo Ave., Esparto	Exterior – 24/7 – Confirmed
West Sacramento	
West Sacramento City Hall 1110 W. Capitol Ave., West Sacramento	Exterior – 24/7 – Confirmed
Nugget Markets 2000 Town Center Plaza, West Sacramento	Confirmed
Raley's 1601 W. Capitol Ave., West Sacramento	Confirmed
Arteaga Starlite Super Market 900 Sacramento Ave., West Sacramento	Confirmed
Winters	
Lorenzo's Market 121 E. Grant Avenue, Winters	Confirmed
Woodland	
Post Office Parking Lot 720 Court St., Woodland	Exterior – 24/7 – Confirmed
Raley's 367 W. Main St., Woodland	Confirmed
Bel Air 1885 E. Gibson Road, Woodland	Confirmed
Yolo County Elections Office – Room B-05 625 Court St., Woodland	Confirmed

VC and BDB Hours of Operation

EC §§4005(a)(10)(I)(vi)(VI) and 4005(a)(10)(I)(vi)(VII)

VC hours will be consistent throughout the county. Other than the 24/7 outdoor BDBs, the ballot drop boxes located inside a facility will be available during the business hours of the selected location. All VCs and all BDBs, regardless of location, will be open on Election Day 7:00 a.m. to 8:00 p.m.

The hours of operation of service locations from the 2021 Recall Election and 2020 Presidential General Election are on the next page. The hours of operation may vary slightly for a given election; however, the dates and hours of availability of the VCs and the BDBs will be widely promoted every election.

2021 Gubernatorial Recall Election

Table 13 2021 VACs

2021 VOTER ASSISTANCE CENTERS (VACs)

Open Sep. 11 to Sep. 13, 10:00 a.m. – 6:00 p.m.
Open Sep. 14 (Election Day), 7:00 a.m. – 8:00 p.m.

DAVIS

UC Davis Memorial Union- Garrison Room 212
225 E. Quad, Davis

Veterans Memorial Center- Multipurpose Rm.
203 E. 14th Street, Davis

Montgomery Elementary School- Multipurpose Rm.
1441 Danbury Street, Davis

Emerson Junior High School- Indoor Commons Rm. 1
2121 Calaveras Avenue, Davis

ESPARTO

Esparto High School- Gymnasium
26675 Plainfield Street, Esparto

WEST SACRAMENTO

Bridgeway Lakes Boathouse
3650 Southport Parkway, West Sacramento

Washington USD Office- Multipurpose Rm.
930 Westacre Road, West Sacramento

Bryte CCT – Bryte Café- Multipurpose Rm.
637 Todhunter Avenue, West Sacramento

WINTERS

Public Safety Facility - EOC Training Rm.
702 W. Main Street, Winters

WOODLAND

Yolo County Administration Building- Room 106
625 Court Street, Woodland

Woodland High School- Gymnasium
21 N. West Street, Woodland

Pioneer High School- Cafeteria
1400 Pioneer Avenue, Woodland

Woodland Community & Senior Center- Ballroom 3
2001 East Street, Woodland

Table 14 2021 BDBs

2021 BALLOT DROP BOXES (BDBs)

Available Aug. 16 through Sep. 13 (hours listed)
Sep. 14 (Election Day) until 8:00 p.m.

CLARKSBURG

Clarksburg Library (Exterior – 24/7)
52915 Netherlands Avenue, Clarksburg

DAVIS

City Hall (Exterior – 24/7)
23 Russell Boulevard, Davis

Nugget Markets (Daily 6:00 a.m. – 10:00 p.m.)
409 Mace Boulevard, Davis

Nugget Markets (Daily 6:00 a.m. – 10:00 p.m.)
1414 E. Covell Boulevard, Davis

Westlake Market (Daily 7:00 a.m. – 11:00 p.m.)
1260 Lake Boulevard, Davis

ESPARTO

Esparto Regional Library (Exterior – 24/7)
17065 Yolo Avenue, Esparto

WEST SACRAMENTO

City Hall (Exterior – 24/7)
1110 W. Capitol Avenue, West Sacramento

West Sacramento Recreation Center
Weekdays 6:00 a.m. - 1:00 p.m.; 5:00 p.m. - 8:00 p.m.
Sat 8:00 a.m. – 5:30 p.m.; Sun 12:00 p.m. – 5:30 p.m.
2801 Jefferson Boulevard, West Sacramento

Arteaga’s Starlite Supermarket
(Daily 8:00 a.m. – 8:00 p.m.)
940 Sacramento Avenue, West Sacramento

WINTERS

Lorenzo’s Market (Daily 7:00 a.m. – 10:00 p.m.)
121 E. Grant Avenue, Winters

WOODLAND

Post Office Parking Lot (Exterior – 24/7)
720 Court Street, Woodland

Raley’s (Daily 6:00 a.m. – 11:00 p.m.)
367 W. Main Street, Woodland

Bel Air (Daily 6:00 a.m. – 11:00 p.m.)
1885 E. Gibson Road, Woodland

Yolo County Elections Office (Weekdays 8 a.m. – 5 p.m.)
625 Court Street, Suite B-05, Woodland

2020 Presidential General Election

Table 15 2020 VACs and BDBs

VOTER ASSISTANCE CENTERS (VACs)

Open Oct. 31 to Nov. 2, 10:00 a.m. – 6:00 p.m.
Open Nov. 3 (Election Day), 7:00 a.m. – 8:00 p.m.

BALLOT DROP BOXES (BDBs)

Available Oct. 5 through Nov. 2 (hours listed)
Nov. 3 (Election Day) until 8:00 p.m.

DAVIS

UC Davis ARC- Ballroom
760 Orchard Road, Davis

Veterans Memorial Center- Multipurpose Rm.
203 E. 14th Street, Davis

Montgomery Elementary School- Multipurpose Rm.
1441 Danbury Street, Davis

Patwin Elementary School- Multipurpose Rm.
2222 Shasta Drive, Davis

DAVIS

City Hall (Exterior – 24/7)
23 Russell Boulevard, Davis

Nugget Markets (Daily 6:00 a.m. – 10:00 p.m.)
409 Mace Boulevard, Davis

Nugget Markets (Daily 6:00 a.m. – 10:00 p.m.)
1414 E. Covell Boulevard, Davis

Westlake Market (Daily 7:00 a.m. – 11:00 p.m.)
1260 Lake Boulevard, Davis

ESPARTO

Esparto High School- Gymnasium
26675 Plainfield Street, Esparto

ESPARTO

Esparto Regional Library (Exterior – 24/7)
17065 Yolo Avenue, Esparto

WEST SACRAMENTO

River City High School- Gymnasium
1 Raider Lane, West Sacramento

Washington USD Office- Multipurpose Rm.
930 Westacre Road, West Sacramento

Bryte CCT- Multipurpose Rm.
637 Todhunter Avenue, West Sacramento

WEST SACRAMENTO

City Hall (Exterior – 24/7)
1110 W. Capitol Avenue, West Sacramento

Nugget Markets (Daily 6:00 a.m. – 10:00 p.m.)
2000 Town Center Plaza, West Sacramento

Arteaga’s Starlite Supermarket
(Daily 8:00 a.m. – 8:00 p.m.)
940 Sacramento Avenue, West Sacramento

WINTERS

Winters Community Center- Multipurpose Rm.
201 Railroad Avenue, Winters

WINTERS

Lorenzo’s Market (Daily 7:00 a.m. – 10:00 p.m.)
121 E. Grant Avenue, Winters

WOODLAND

Yolo County Administration Building- Room 106
625 Court Street, Woodland

Woodland High School- Gymnasium
21 N. West Street, Woodland

Pioneer High School- Gymnasium
1400 Pioneer Avenue, Woodland

WOODLAND

Post Office Parking Lot (Exterior – 24/7)
720 Court Street, Woodland

Raley’s (Daily 6:00 a.m. – 11:00 p.m.)
367 W. Main Street, Woodland

Bel Air (Daily 6:00 a.m. – 11:00 p.m.)
1885 E. Gibson Road, Woodland

Vote Center
Facility Layouts

*EAP Appendix C
Amended Draft*

Yolo County
California Voter's Choice Act
Election Administration Plan



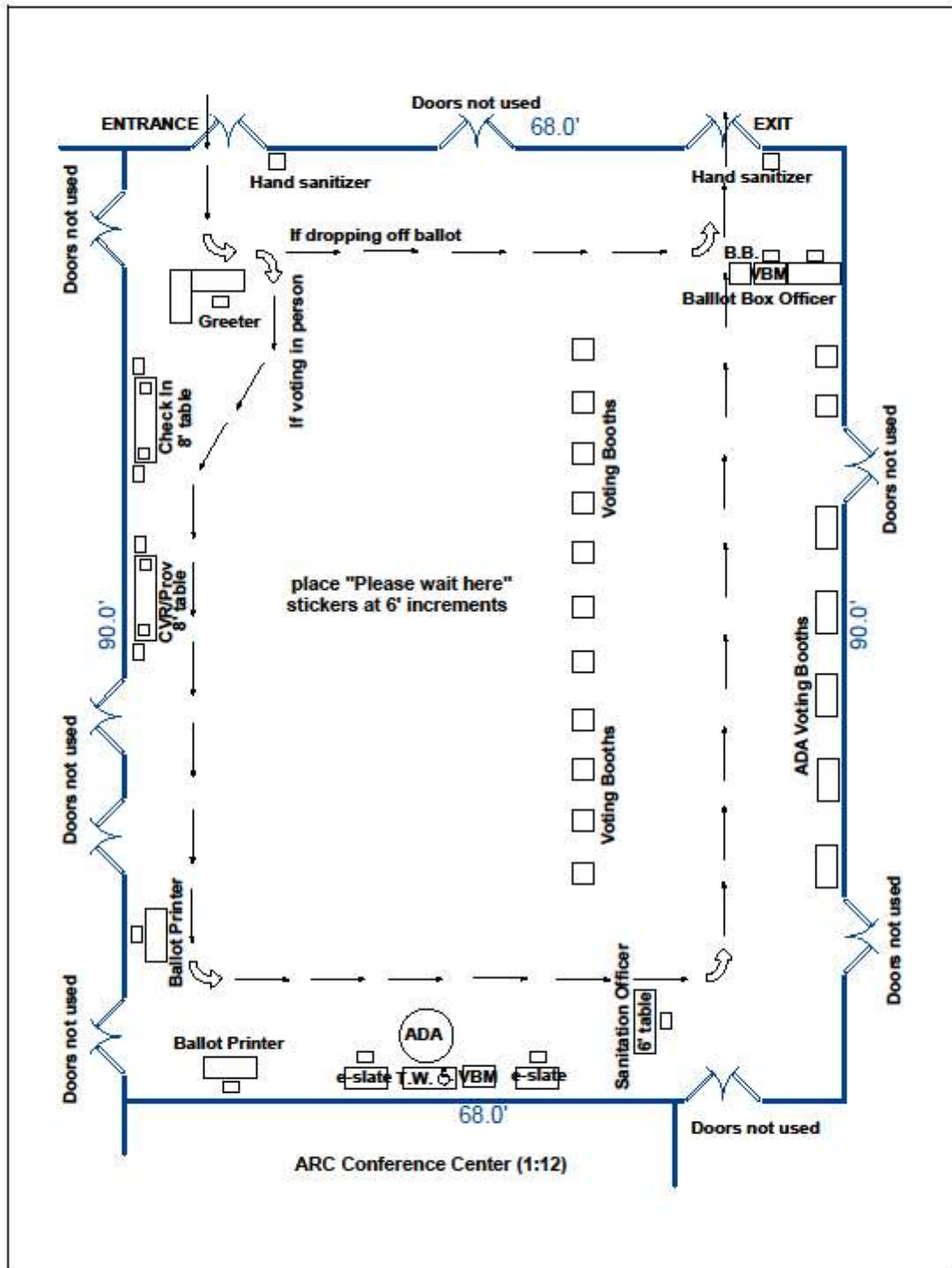
Appendix C | Vote Center Facility Layouts

EC §4005(a)(10)(I)(vi)(XI)

Yolo County Elections surveys and plots a floor plan for each of the Vote Centers. Following are the room layouts of Vote Centers from the November 3, 2020 General Election and the September 14, 2021 California gubernatorial Recall Election. We plan to use these rooms for the next election; however, the locations are subject to change, based on the availability of the location host. Several of the facility floor plans are scheduled to be updated in 2022. Locations marked with an asterisk (*) are scheduled to be replaced in 2022.

UC Davis – ARC Ballrooms A&B (2020)

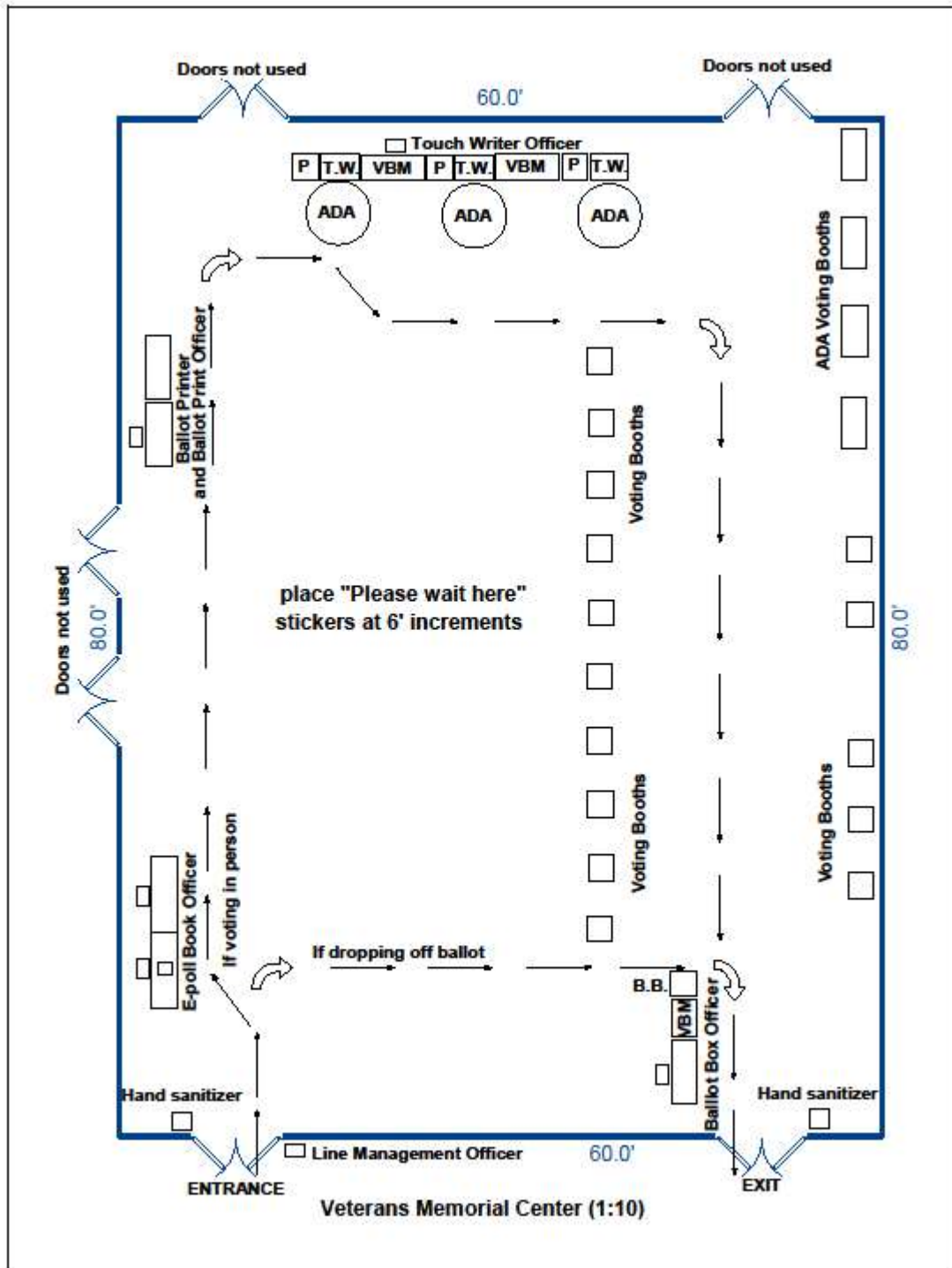
BUILDING SKETCH



© Starcap Marketing, LLC dba Apex Software

Veterans Memorial Center – Multipurpose Room (2021)

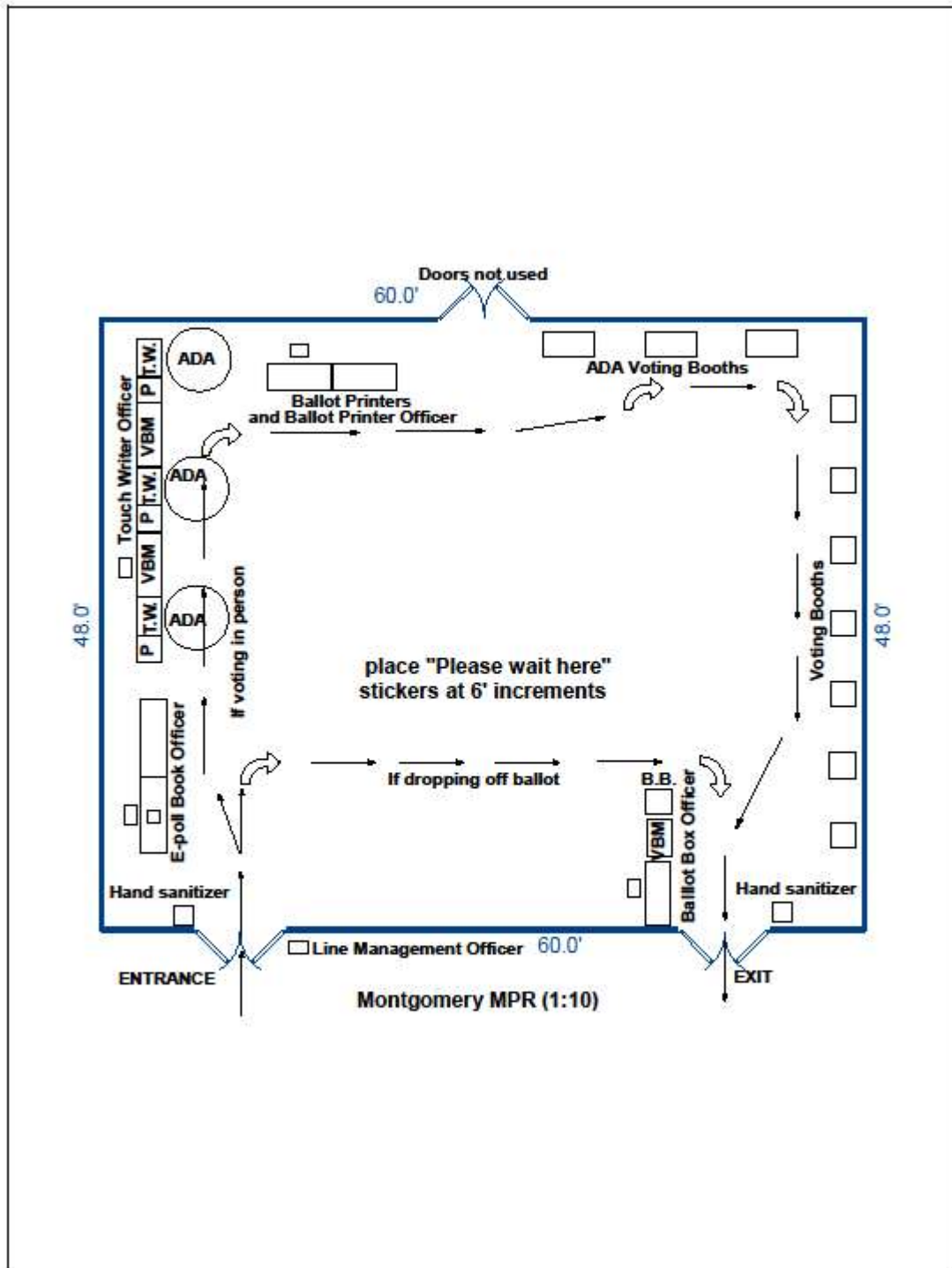
BUILDING SKETCH



© Starcap Marketing, LLC. dba Apex Software

Montgomery Elementary School – Multipurpose Room (2021)

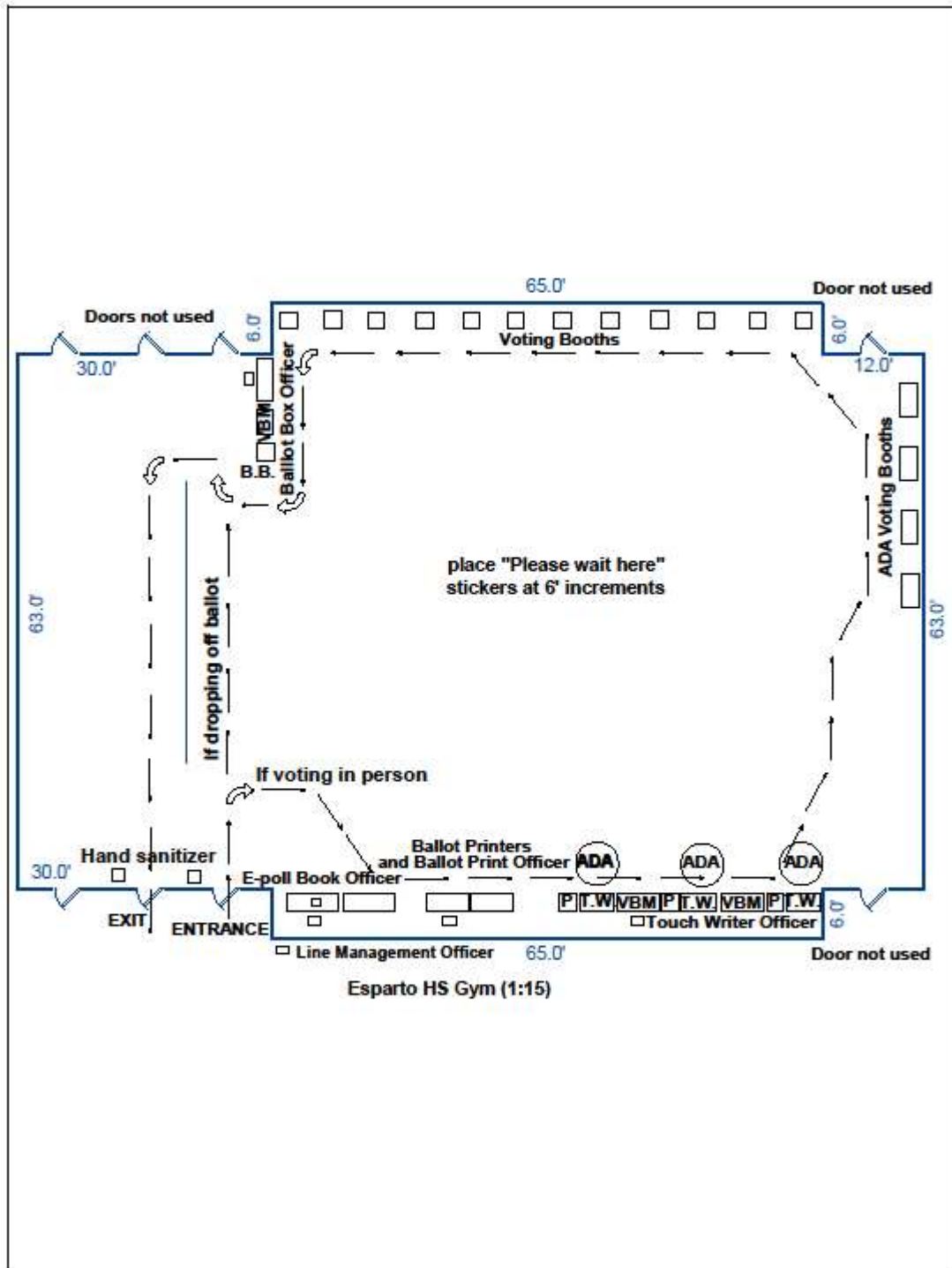
BUILDING SKETCH



© Starcap Marketing, LLC. dba Apex Software

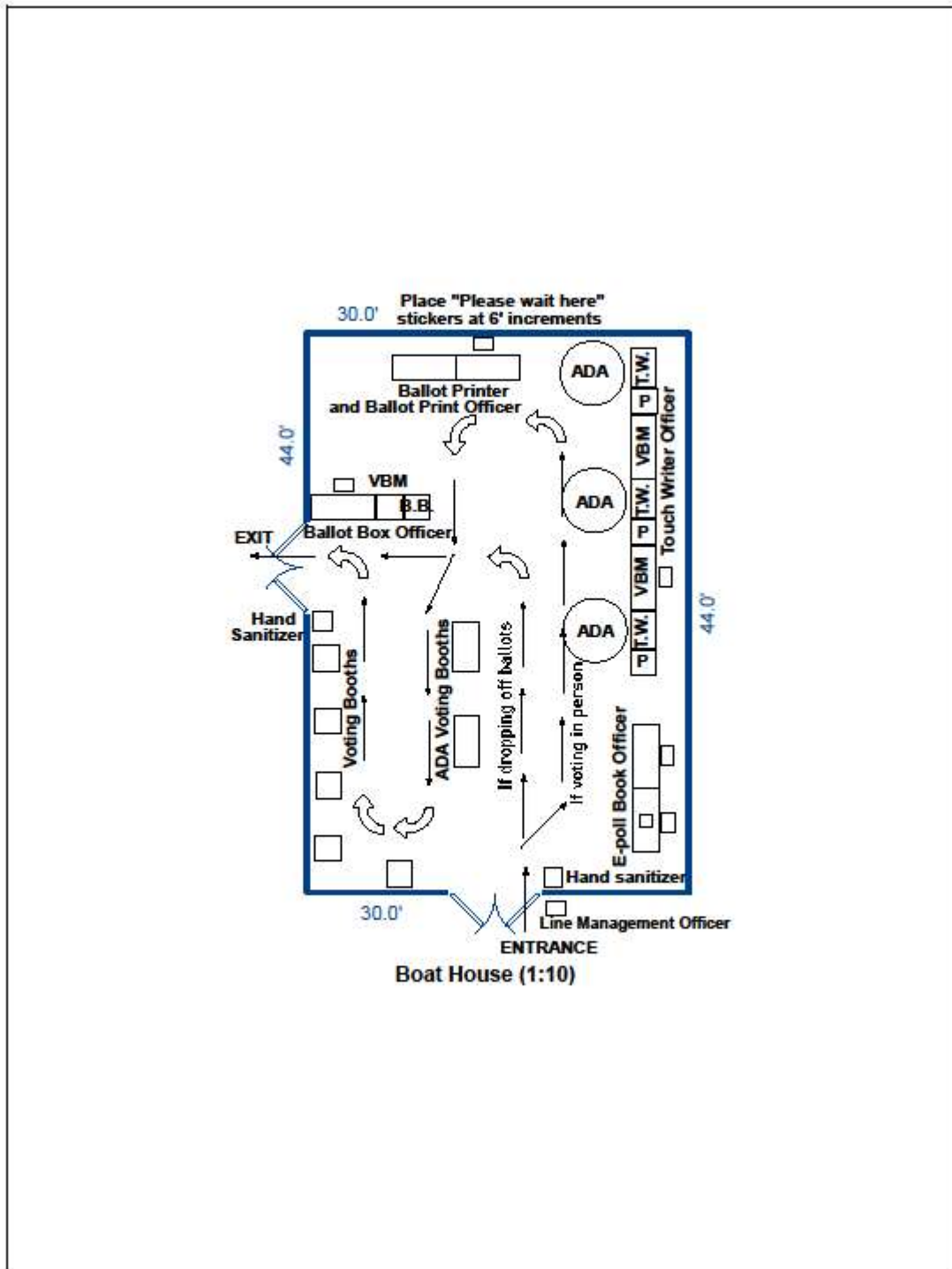
Esparto High School – Gymnasium *

BUILDING SKETCH



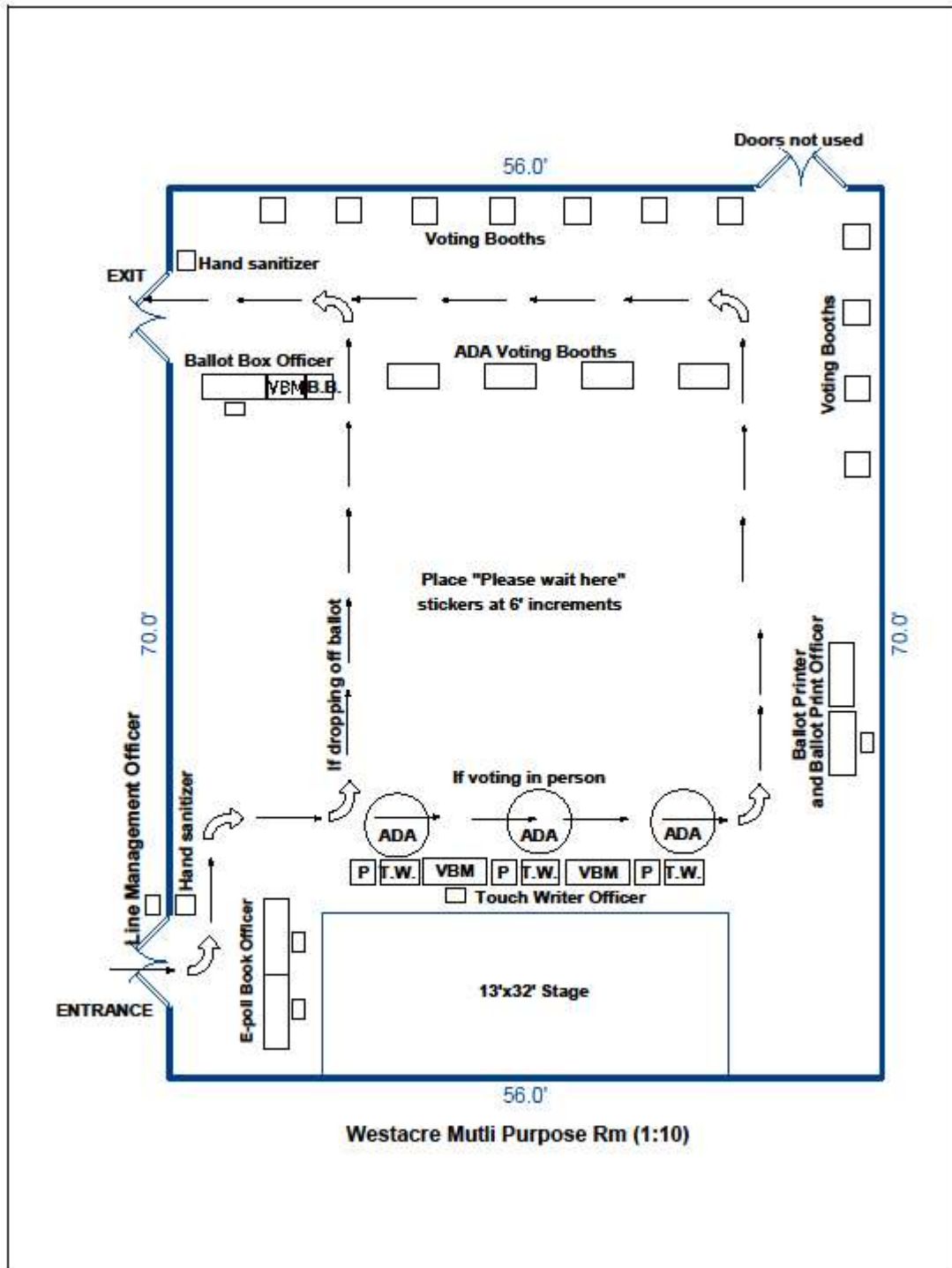
Bridgeway Lakes Boathouse (2021)

BUILDING SKETCH



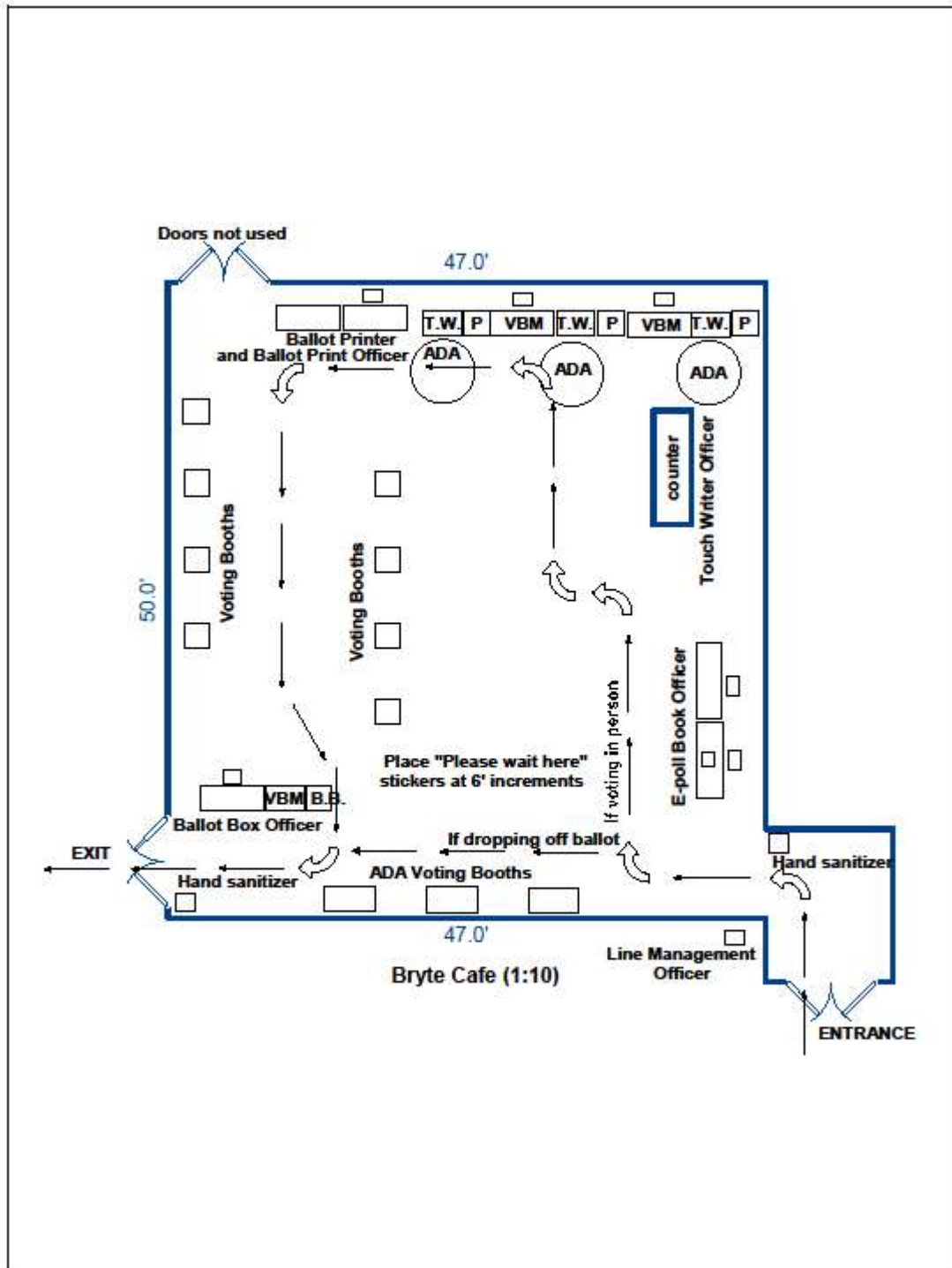
Washington USD Office – Multipurpose Room (2021) *

BUILDING SKETCH



Bryte CCT – Bryte Café (2021)

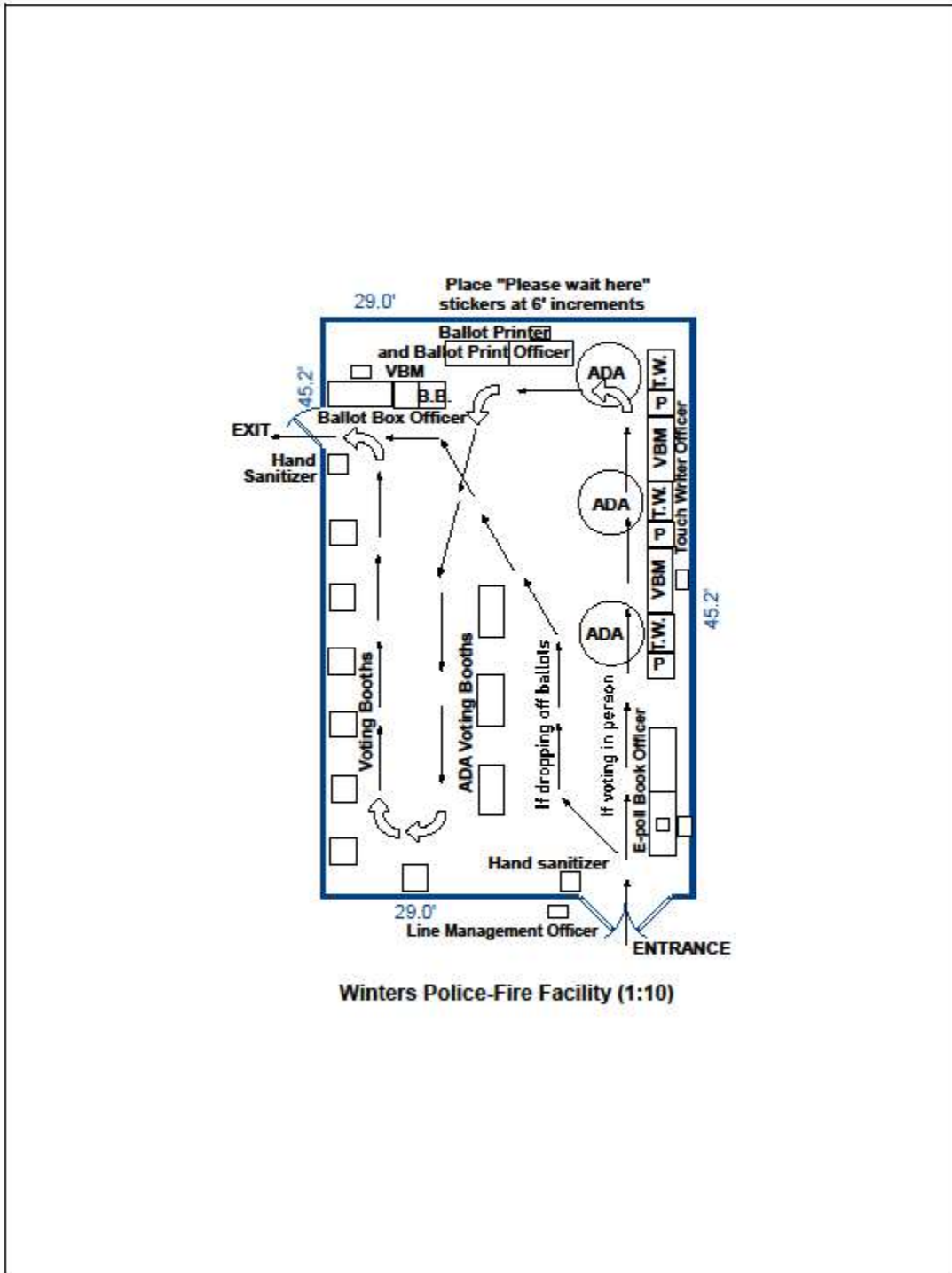
BUILDING SKETCH



© Starcap Marketing, LLC. dba Apex Software

Winters Public Safety Facility – EOC Training Room (2021)

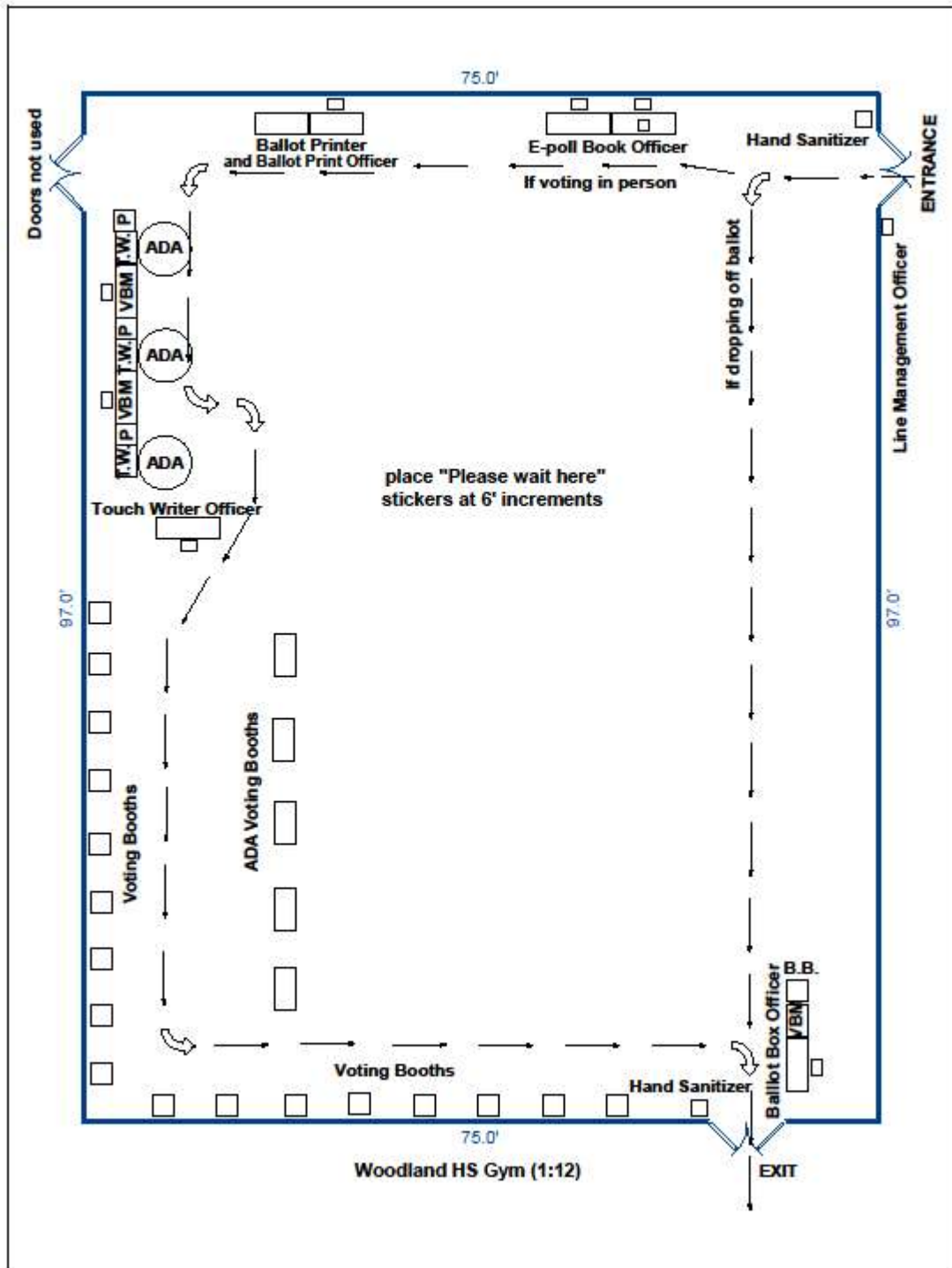
BUILDING SKETCH



Winters Police-Fire Facility (1:10)

Woodland High School –Gymnasium (2021)

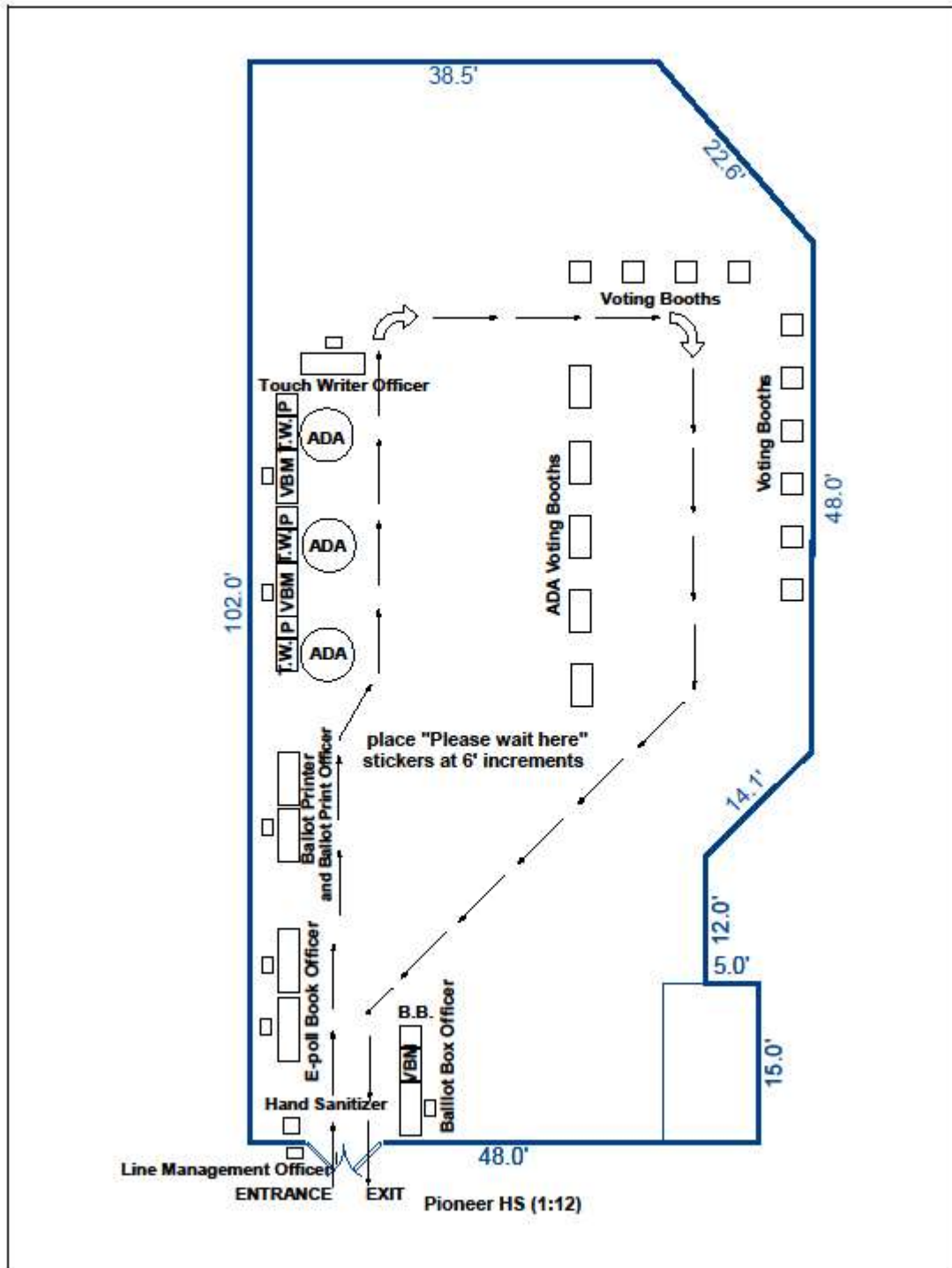
BUILDING SKETCH



© Starcap Marketing, LLC. dba Apex Software

Pioneer High School – Cafeteria (2021)

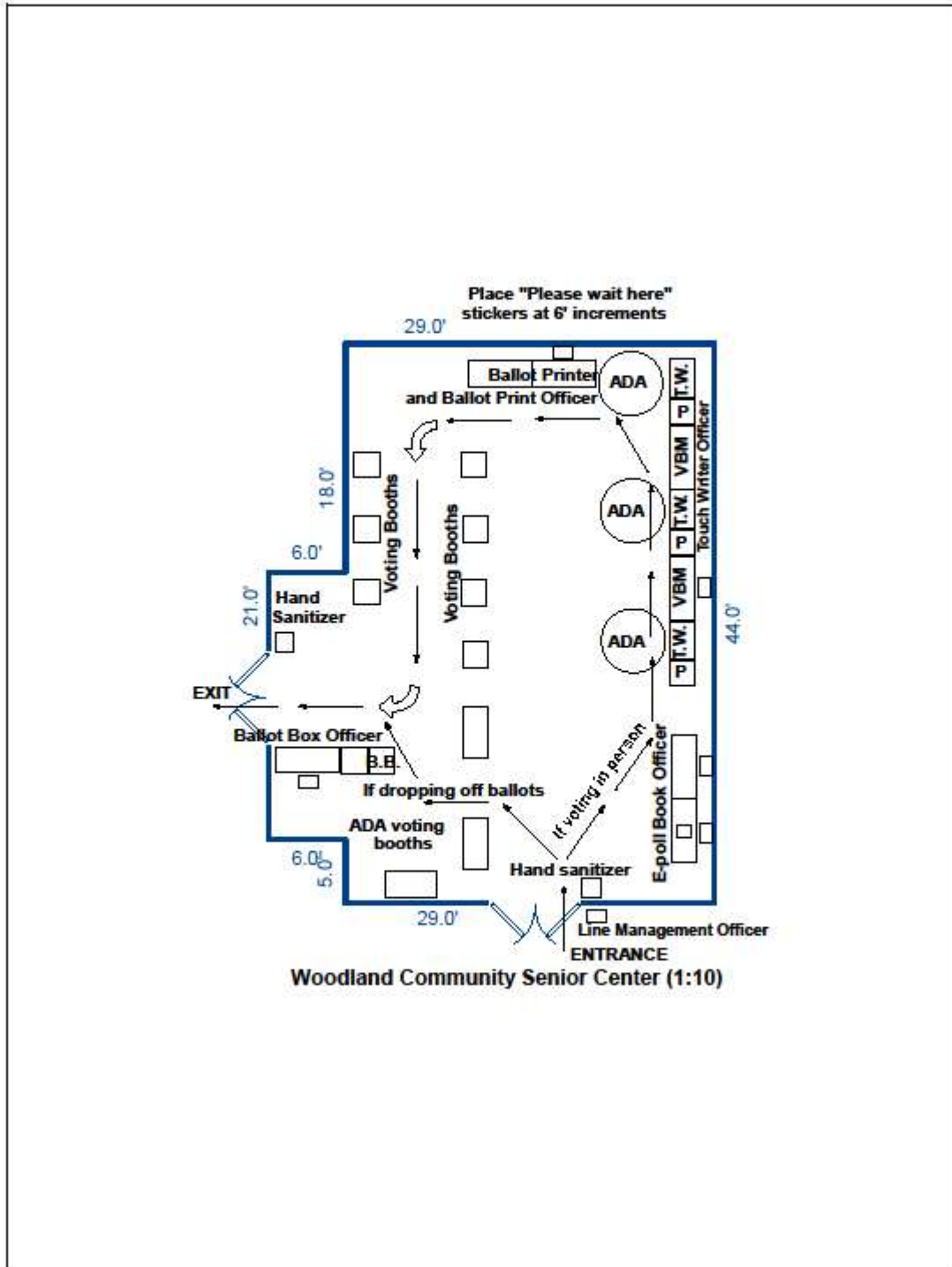
BUILDING SKETCH



© Starcap Marketing, LLC. dba Apex Software

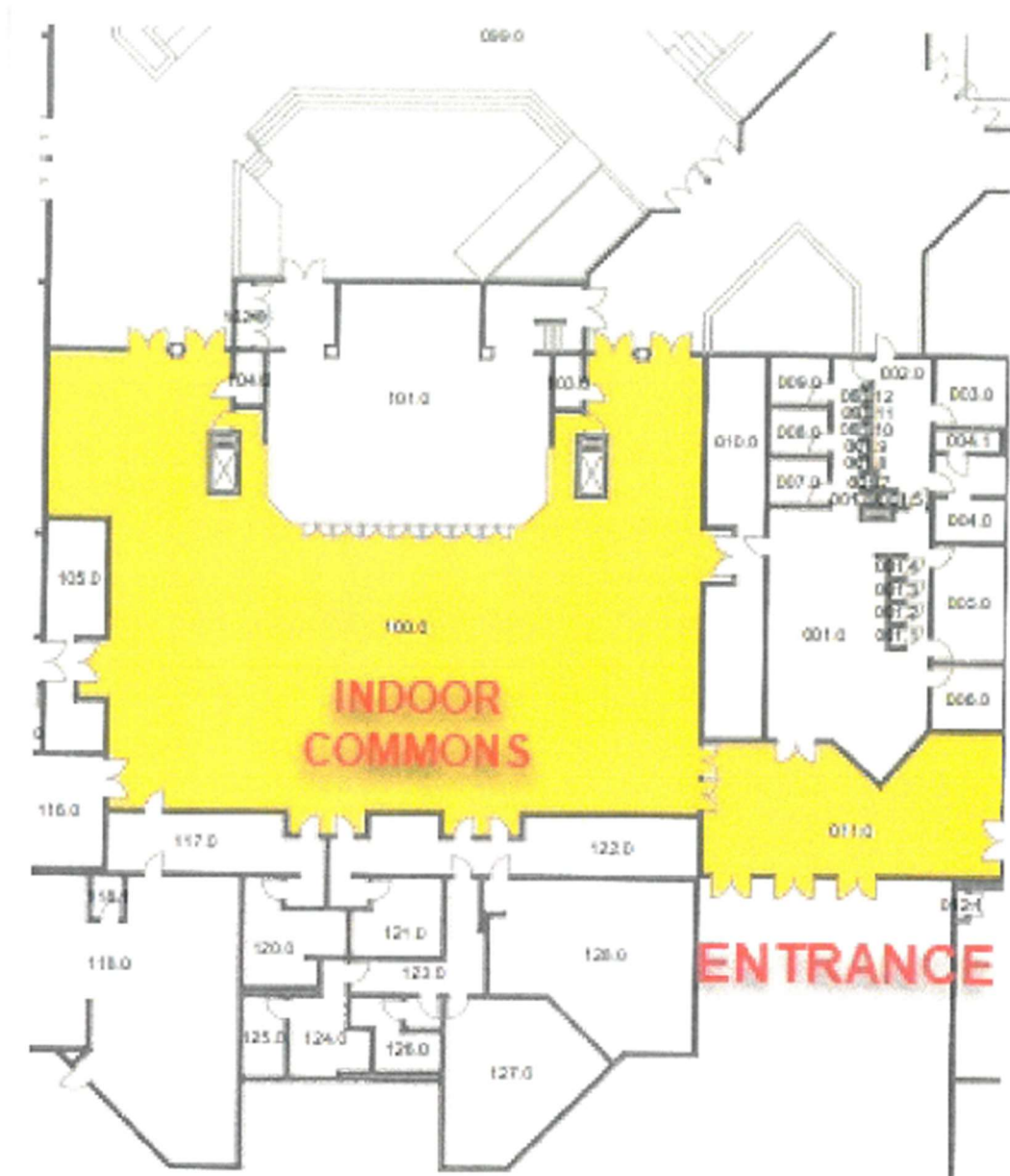
Woodland Community & Senior Center –Ballroom 3 (2021)

BUILDING SKETCH



Emerson Junior High School - Indoor Commons (Multipurpose Room)

The site has been surveyed for accessibility. In 2022, the Vote Center will be in a room adjacent to the one used in 2021. The floor layout will be created for 2022.



Yolo County California Voter's Choice Act Election Administration Plan



Appendix D | Advisory Committees

Voting Accessibility Advisory Committee Members

Of the initial meetings of the Voting Accessibility Advisory Committee (VAAC), members identified as part of a disability community, a family member of a person with a disability, an advocate, a person employed, or volunteers in a capacity that serves people with disabilities. Current outreach activities are anticipated to seat more members with an even wider diversity of individuals.

VAAC Meeting Schedule

The Voting Accessibility Advisor Committee (VAAC) convened for the first time on Thursday, August 26, 2021. Unless otherwise specified, the committee meets on the third Thursday of the month. The committee may meet more often in preparation for the 2022 election cycle.

Table 16 VAAC Meeting Schedule

Meeting Date	Time	Number of Attendees
Thursday, August 26, 2021	5:00 p.m. to 6:00 p.m.	15
Thursday, September 30, 2021	5:00 p.m. to 6:00 p.m.	11
Thursday, October 21, 2021	5:00 p.m. to 6:00 p.m.	7
Thursday, November 18, 2021	6:30 p.m. to 7:30 p.m.	5
Thursday, December 16, 2021	6:30 p.m. to 7:30 p.m.	6
Thursday, January 20, 2022	6:30 p.m. to 7:30 p.m.	7
Thursday, Feb. 17, 2022	6:30 p.m. to 7:30 p.m.	
Thursday, March 17, 2022	6:30 p.m. to 7:30 p.m.	
Thursday, April 21, 2022	6:30 p.m. to 7:30 p.m.	
Thursday, May 19, 2022	6:30 p.m. to 7:30 p.m.	
Thursday, June 16, 2022	6:30 p.m. to 7:30 p.m.	
Thursday, July 21, 2022	6:30 p.m. to 7:30 p.m.	
Thursday, August 18, 2022	6:30 p.m. to 7:30 p.m.	
Thursday, September 15, 2022	6:30 p.m. to 7:30 p.m.	

Language Accessibility Advisory Committee Members

Of the initial meetings of the LAAC the following languages were represented: ASL, Italian, Korean, Portuguese, and Spanish. Current outreach activities are anticipated to seat more members with an even wider diversity of perspectives and languages.

LAAC Meeting Schedule

The Language Accessibility Advisory Committee (LAAC) convened for the first time on Thursday, August 26, 2021. The committee meets on the third Thursday of the month unless otherwise specified. The committee may meet more often in preparation for the 2022 election cycle.

Table 17 LAAC Meeting Schedule

Meeting Date	Time	Number of Attendees
Thursday, August 26, 2021	6:00 p.m. to 7:00 p.m.	15
Thursday, September 30, 2021	6:00 p.m. to 7:00 p.m.	8
Thursday, October 21, 2021	6:00 p.m. to 7:00 p.m.	7
Thursday, November 18, 2021	5:30 p.m. to 6:30 p.m.	5
Thursday, December 16, 2021	5:30 p.m. to 6:30 p.m.	2
Thursday, January 20, 2022	5:30 p.m. to 6:30 p.m.	5
Thursday, Feb. 17, 2022	5:30 p.m. to 6:30 p.m.	
Thursday, March 17, 2022	5:30 p.m. to 6:30 p.m.	
Thursday, April 21, 2022	5:30 p.m. to 6:30 p.m.	
Thursday, May 19, 2022	5:30 p.m. to 6:30 p.m.	
Thursday, June 16, 2022	5:30 p.m. to 6:30 p.m.	
Thursday, July 21, 2022	5:30 p.m. to 6:30 p.m.	
Thursday, August 18, 2022	5:30 p.m. to 6:30 p.m.	
Thursday, September 15, 2022	5:30 p.m. to 6:30 p.m.	

Yolo County California Voter's Choice Act Election Administration Plan



Appendix E | Community Partners and Events

Table 18 Partners in Siting VCs and BDBs

Partner in Siting Vote Centers and Ballot Drop Boxes	City
Arteaga's Starlite Supermarket	West Sacramento
Bel Air Grocery Store	Woodland
Lorenzo's Market	Winters
Nugget Markets	Davis & West Sacramento
Raley's Grocery Store	West Sacramento & Woodland
Westlake Market	Davis
City of Davis City Clerk	Davis
City of West Sacramento City Clerk	West Sacramento
City of Woodland City Clerk	Woodland
City of Winters City Clerk	Winters
Davis Joint Unified School District	Davis
Esparto Unified School District	Esparto
Washington Unified School District	West Sacramento
Woodland Joint Unified School District	Woodland
Yolo County Public Library	Clarksburg & Esparto
University of California	Davis
U.S. Postal Service	Woodland

Table 19 U.C. Davis Organizations

Organizations at U.C. Davis – Outreach Contacts	
Indian Student Association at UC Davis	Korean Graduate Student Association
Japanese American Student Society	Chicanx Latinx Collegiate Association
La Raza Pre-Law Student Association	Compas at UCD
Young Democratic Socialists of America at UC Davis	Graduate Student & Post-Doctoral SACNAS at UC Davis
Korean-American Scientists and Engineers Association Young Generation, Davis Chapter	Latinx Law Students Association
Mujeres Ayudando la Raza	Hmong Student Union
Mexican Graduate Student Association	Aggie Neurodiversity Community
Mariachi Cielito Lindo	Davis College Democrats
Model United Nations at UC Davis	Hermanas Unidas de UC Davis

Table 20 Community Organizations

Community Organizations – Outreach Contacts		
Gurdwara Sahib Sikh Temple	RISE Inc. (Esparto, Capay Valley, and Winters area)	D'Primera Mano
APAPA (Asian Pacific Islander American Public Affairs)*	International House of Davis	Davis Chamber of Commerce
AAPI (Asian American Pacific Islander)*	National Alliance on Mental Illness (NAMI) Yolo County	UC Davis Student Based Organizations
Yolo County Healthy Aging Alliance*	Northern California Children's Therapy Center	Yolo County WIC
Resources for Independent Living	NorCal Resist *	Yolo County BOS- Supervisor Barajas
Yolo County Childrens Alliance*	City of Davis (Working Groups & City Council)	Davis Senior Center
Winters Senior Foundation	City of Winter (Working Groups & City Council)	Yolo County Poll Workers*
Woodland Community & Senior Center	City of West Sacramento (Working Groups & City Council)	UC Davis MSA
Yolo County Library	City of Woodland (Working Groups & City Council)	Shifa Clinic
Empower Yolo	Winters Senior Commission on Aging	Sikh Cultural Association at UCD
League of Women Voters Davis*	Dignity Health- Woodland Memorial Hospital	California Department of Rehabilitation*
League of Women Voters Woodland	Asian Americans Advancing Justice- Asian Law Caucus	Melissa Gruhler
Yolo County Agriculture Worker Program	Esparto Regional Chamber of Commerce	Jeana Eriksen (Chairperson)
Yolo County Food Bank	Winters Democracy Works	Winters Community Corazon
Short Term Emergency Aide Commission (STEAC)	Yolo County IHSS*	ApoYolo
Catholic Charities of Yolo-Solano	Disability Rights California*	Sikh Cultural Association at UCD

Samples of Flyers Posted by Local Business

YOUR VOTE MATTERS!

**IMPORTANT CHANGES
DUE TO COVID-19**

GET READY:
Check your voter registration status & address
voterstatus.sos.ca.gov

NEW IN 2020:
Every active registered CA voter will receive a
Vote-by-Mail ballot starting October 5

NEW LOCATIONS & DATES:
12 Ballot Drop Boxes (Oct. 5 - Nov. 3)
12 Voter Assistance Centers (Oct. 31 - Nov. 3)
www.yoloelections.org (QR code)



For more information:
(530) 666-8133
elections@yolocounty.org

**YOLO VOTES!
VOTE SAFE YOLO!**



¡SU VOTO IMPORTA!

**CAMBIOS IMPORTANTES
DEBIDO AL COVID-19**

PREPÁRESE:
Revisa el estado de tu inscripción y dirección
voterstatus.sos.ca.gov

NUEVO EN EL 2020:
Cada votante de California inscrito y activo recibirá
una boleta electoral por correo a partir del
5 de octubre

NUEVAS UBICACIONES Y FECHAS:
12 urnas electorales
(Del 5 de octubre al 3 de noviembre)
12 centros de asistencia al votante
(Del 31 de octubre al 3 de noviembre)
www.yoloelections.org (código QR)



Para más información:
(530) 666-8133
elections@yolocounty.org

**¡YOLO VOTA!
¡YOLO VOTA DE
MANERA SEGURA!**



여러분의 한 표가 중요합니다!

**COVID-19로 인한 중요
변경 사항
준비하십시오:**

여러분의 유권자 등록 현황과 주소를 확인하십시오
voterstatus.sos.ca.gov

2020년도 신규 사항:
현재 등록된 모든 CA 유권자는 10월 5일부터 우편 투표용 투표용지를 수령하게 됩니다.

신규 투표 장소 및 운영 일자:
12 군데의 투표용지 투입함(10월 5일 - 11월 3일)
12 군데의 유권자 지원 센터(10월 31일 - 11월 3일)
www.yoloelections.org (QR 코드)



더 자세한 사항은
(530) 666-8133
elections@yolocounty.org
YOLO가 투표합니다!

YOLO에서 안전하게 투표하십시오!



您的投票至關重要！

**因COVID - 19產生的
重要變更**

做好準備：
查看您的選民登記狀態和地址：
voterstatus.sos.ca.gov

2020年的新變化：
每位已經完成登記的CA選民將
自10月5日起收到一份郵寄選票

新地點與日期：
12個選票投遞箱（10月5日至11月3日）
12個選民協助中心（10月31日至11月3日）
www.yoloelections.org（二維碼）



獲取更多資訊：
(530) 666-8133
elections@yolocounty.org

**YOLO積極投票！
YOLO安全地進行投票！**



ਤੁਹਾਡੀ ਵੋਟ ਮਾਇਨੇ ਰੱਖਦੀ ਹੈ!

ਜ਼ਰੂਰੀ ਬਦਲਾਅ
COVID - 19 (ਕੋਵਿਡ-19) ਦੇ ਕਾਰਨ

ਤਿਆਰ ਰਹੋ:
voterstatus.sos.ca.gov
ਤੋਂ ਜਾਕੇ ਆਪਣੇ ਵੋਟਰ ਰਜਿਸਟ੍ਰੇਸ਼ਨ ਦੀ ਸਥਿਤੀ ਅਤੇ ਪਤੇ ਨੂੰ ਚੈਕ ਕਰੋ

2020 ਵਿੱਚ ਨਵਾਂ:
5 ਅਕਤੂਬਰ ਤੋਂ ਹਰੇਕ ਕੈਲੀਫੋਰਨੀਆਂ (California, CA) ਵੋਟਰ ਨੂੰ ਇੱਕ ਡਾਕ ਰਾਹੀਂ ਵੋਟ ਬੈਲਟ ਪ੍ਰਾਪਤ ਹੋਵੇਗਾ

ਨਵੀਆਂ ਥਾਵਾਂ ਅਤੇ ਤਾਰੀਖਾਂ:
12 ਬੈਲਟ ਡ੍ਰਾਪ-ਬੋਕਸ (5 ਅਕਤੂਬਰ - 3 ਨਵੰਬਰ)
12 ਵੋਟਰ ਸਹਾਇਤਾ ਕੇਂਦਰ (31 ਅਕਤੂਬਰ - 3 ਨਵੰਬਰ)
www.yoloelections.org (QR ਕੋਡ)



ਵਧੇਰੀ ਜਾਣਕਾਰੀ ਲਈ:
(530) 666-8133
elections@yolocounty.org
YOLO ਵੋਟ ਪਾਉਣਾ ਹੈ:
YOLO ਸੁਰੱਖਿਅਤ ਤਰੀਕੇ ਨਾਲ ਵੋਟ ਪਾਉ:



ВАШ ГОЛОС ВАЖЕН!

ВАЖНЫЕ ИЗМЕНЕНИЯ
ПО ПРИЧИНЕ COVID - 19

БУДЬТЕ ГОТОВЫ:
проверьте свой статус и адрес, указанные при регистрации избирателя, на веб-сайте voterstatus.sos.ca.gov

ЧТО НОВОГО В 2020 ГОДУ:
каждый активный зарегистрированный избиратель CA получит бюллетень для голосования по почте начиная с 5 октября

НОВЫЕ МЕСТА И ДАТЫ:
12 урн для сбора бюллетеней (5 октября - 3 ноября)
12 центров поддержки избирателей (31 октября - 3 ноября)
www.yoloelections.org (QR-код)



Более подробная информация:
(530) 666-8133
elections@yolocounty.org
YOLO ГОЛОСУЕТ!
YOLO ЗА БЕЗОПАСНОЕ ГОЛОСОВАНИЕ!



Community Events

Samples of Flyers Inviting Public to the EAP Consultation Meetings

The Yolo County Elections Office invites you to attend a virtual meeting



Share your thoughts on how to make voting more accessible for people with disabilities.
Any member of the public can give input into the county's election administration plan.

Monday, December 13, 2021 | 7:00pm-8:00 p.m.
Zoom link: <https://yolocounty.zoom.us/j/88167107445>
Meeting ID: 881 6710 7445

You can also submit comments by email to:
elections@yolocounty.org

The Yolo County Elections Office invites you to attend a virtual meeting



Share your thoughts on how to make voting more accessible for voters of minority language groups.
Any member of the public can give input into the county's election administration plan.

Monday, December 13, 2021 | 6:00pm-7:00 p.m.
Zoom link: <https://yolocounty.zoom.us/j/82851165501>
Meeting ID: 828 5116 5501

You can also submit comments by email to:
elections@yolocounty.org

Yolo County California Voter's Choice Act Election Administration Plan



Appendix F | Media Partners

EC §4005(a)(10)(I)(i)(I)

Table 21 Media Partners

Media Partners	
Television	
	KCRA 3
	Univision 19 (Spanish)
	NBCUniversal
	ABC10
	Fox40
	CBS13
	Telemundo (Spanish)
Radio	
	KDVS (UC Davis)
	Davis Media Access
	NPR/Cap Radio
	KHTK
	KFBK
	KOVR
	Ethno.fm 87.7FM Radio (Russian)
Print and Online Media	
	CalMatters
	Daily Democrat
	Davis Enterprise
	Winters Express
	West Sacramento News-Ledger
	Sacramento Bee
	The Aggie (UC Davis)
	Davis Vanguard
	Associated Press
	d'primeramano (Spanish)
	Diaspora Community Newspaper (Russian)
	Valley Voice

Table 22 Yolo County Elections Social Media

Elections Office Social Media as of 12/03/2021	
Platform	Followers
Facebook.com/YoloACE	796
Instagram.com/YoloCoACE	394
Twitter.com/YoloCoACE	479
YouTube - Yolo County ACE	N/A

Direct-to-Voter
Contact Materials

*EAP Appendix G
Amended Draft*

Yolo County
California Voter's Choice Act
Election Administration Plan



Appendix G | Direct-to-Voter Contact Materials

EC §4005(a)(10)(I)(i)(X)

The images in this section are representative of Yolo County Elections' previous mailers and flyers. These will be updated for the 2022 elections.

Figure 1 Vote-by-Mail Period Starting Notice

YOLO COUNTY ELECTIONS OFFICE

A BALLOT IS ON ITS WAY!
ALL ACTIVE REGISTERED
VOTERS WILL BE SENT A
BALLOT STARTING
OCTOBER 5, 2020!

Check your mailbox regularly & return your marked ballot early to prevent any delays in processing.

Vote Safe Yolo!

Return your ballot in any of three ways:

- 1) By Mail
- 2) By Ballot Drop Box
- 3) Early and in person at one of the 12 Voter Assistance Centers in Yolo County

Sign up to track your ballot:
california.ballottrax.net/voter/

For more Information: yoloelections.org | Contact us: (530) 666-8133 or elections@yolocounty.org

Figure 2 Preparing for the 2020 General Election (English version)

THINGS TO KNOW IN PREPARATION FOR THE NOVEMBER 3, 2020 GENERAL ELECTION

Register to Vote/Check Your Voter Status:
register tovote.ca.gov
voterstatus.sos.ca.gov

Every Active Registered Voter Will Be Sent a Vote-by-Mail Ballot

Return Your Ballot:

- 1) By Mail (Return Postage Paid)
- 2) At any Ballot Drop Box
- 3) At any of the 12 Yolo County Voter Assistance Centers- Saturday, October 31 to Tuesday, November 3, 2020.

Vote Safe. Vote Early.



Ballot Drop Box Locations:

- 1) Post Office Parking Lot - Exterior 24/7
720 Court Street, Woodland
- 2) Raley's- Daily, 6:00 a.m.-11:00 p.m.
367 W. Main Street, Woodland
- 3) Bel Air- Daily, 6:00 a.m.-11:00 p.m.
1885 E. Gibson Road, Woodland

Voter Assistance Center Locations:

- 1) Woodland High School-Gymnasium,
21 N. West Street, Woodland
- 2) Pioneer High School- Gymnasium,
1400 Pioneer Avenue, Woodland
- 3) Yolo County Admin. Bldg. - Rm. 106
625 Court Street, Woodland

Figure 3 Preparing for the 2020 General Election (Spanish version)

COSAS QUE TIENE QUE SABER EN PREPARACIÓN PARA LA ELECCIÓN GENERAL DEL 3 DE NOVIEMBRE DEL 2020

Regístrese para Votar/Verifique su Status de Votante:
registertovote.ca.gov
voterstatus.sos.ca.gov

A Cada Votante Registrado Activo Se le Enviara una Balota para Votar por Correo

Ubicación de entrega de balotas

- 1) Oficina Postal Estacionamiento - Exterior 24/7
720 Court Street, Woodland
- 2) Raley's-Diario, 6:00 a.m.-11:00 p.m.
367 W. Main Street, Woodland
- 3) Bel Air- Diario, 6:00 a.m.-11:00 p.m.
1885 E. Gibson Road, Woodland

Devuelva Su Balota:

- 1) Por Correo (franqueo pagado)
- 2) En un Buzón Electoral Oficial
- 3) En cualquiera de los 12 Centros de Asistencia al Votante en el Condado de Yolo- sábado, 31 de octubre a martes, 3 de noviembre del 2020.

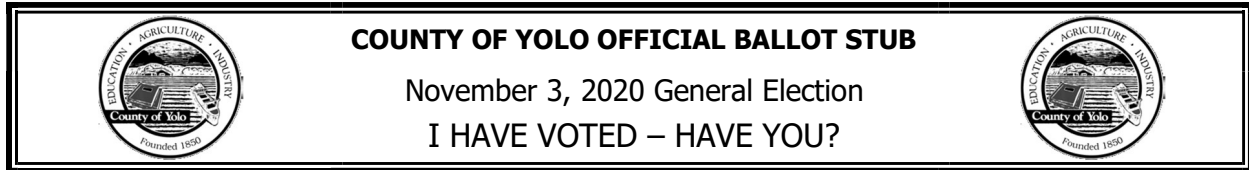
Vote seguro. Vote temprano.

Ubicación de Centros de Asistencia al Votante:

- 1) Woodland High School-Gimnasio, 21 N. West Street, Woodland
- 2) Pioneer High School- Gimnasio, 1400 Pioneer Avenue, Woodland
- 3) Yolo County Edificio Administrativo- Sal. 106, 625 Court Street, Woodland



Figure 4 Nov 2020 General Election Official Ballot Stub & Voter Information



State law requires that voters receive a ballot stub as evidence that an official ballot was issued. The California Elections Code allows counties to provide a paper ballot stub. This is your official ballot stub should you wish to keep it.

IMPORTANT MESSAGE FOR VOTE BY MAIL VOTERS

To preserve public health in the face of the threat of COVID-19, as of June 18, 2020 per Assembly Bill No. 860, every active registered voter for the November 3, 2020 General Election will automatically receive an official ballot in the mail. To ensure that the November election is accessible, secure, and safe, in-person voting opportunities are available this November in a manner that is consistent with public health guidance and requirements. If you plan on voting in-person, please bring your official Vote by Mail packet with you to the voting location. If you have questions, call the Yolo County Elections Office at (530) 666-8133 or toll-free in CA at (800) 649-9943.

To ensure your ballot is counted correctly, turn this sheet over.



Voter
Survey



Register to
Vote



Visit
yoloelections.org



Do you want your ballot to be counted? WE DO!

Make sure to do the following:

- 1. SIGN YOUR ENVELOPE.** You must sign your return envelope, or your ballot cannot be counted. State law requires the Yolo County Elections Office to match the signature on your registration card to the signature on the outside of your return envelope before we count your ballot.
- 2. SIGNATURE AUTHORIZING ANOTHER TO RETURN YOUR BALLOT.** While most mail ballot voters return their voted ballots by mail, you may choose to return your ballot in person to the Yolo County Elections Office in Woodland or to any voting or ballot drop off locations in California. You may also authorize certain people to return your ballot, but you must sign your envelope where required and the designee must sign the authorization section on the return envelope, or we cannot accept your ballot from that person.
- 3. PLAN TO HAVE YOUR BALLOT ARRIVE ON TIME.** If you hand-deliver your ballot on Election Day, it must be received by the Elections Office in Woodland or at any voting or ballot drop box location in California no later than 8:00 PM for it to count. If you return your ballot by mail, no postage is necessary. Make sure to check with your local post office for current days/hours of operation, as your ballot must be postmarked on or before Election Day and received within 17 days after Election Day or it cannot be counted. We suggest you mail your ballot at your earliest convenience.

For more information, visit www.yoloelections.org and/or call (530) 666-8133.

YOLO COUNTY ELECTIONS OFFICE 625
COURT STREET, SUITE B-05
WOODLAND, CA 95695

IMPORTANT CHANGES TO THE NOVEMBER ELECTION



A ballot for the November 3, 2020 General Election will be mailed to all voters beginning October 5, 2020. No request is necessary.



No postage is necessary to return your ballot by mail. You may also return your ballot to any of our secure Ballot Drop Boxes. These locations can be found at yoloelections.org and in the Voter Information Guide that will be mailed to you beginning September 24, 2020.



Please check your registration information at VoterStatus.sos.ca.gov to confirm that you are registered and that your ballot will arrive to your correct address.



Sign up at WheresMyBallot.sos.ca.gov to track your ballot and receive notifications on the mailing and counting of your ballot through automatic email, text or voice call notifications.



Our Remote Accessible Vote-by-Mail (RAVBM) system provides an accessible option for voters to receive their ballots digitally at home and mark them independently and privately before returning them to us. Visit yoloelections.org or call us for more information. For the November 3, 2020 Election, any registered voter may use the RAVBM option.



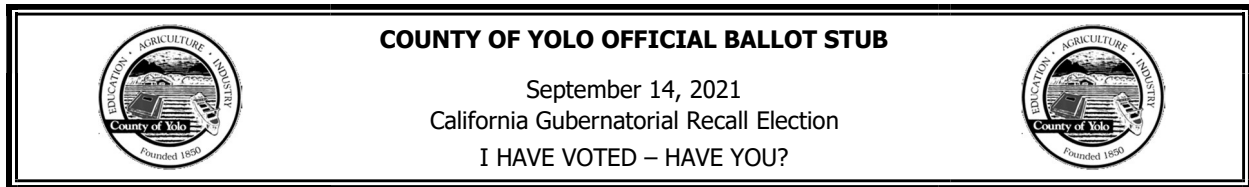
Language assistance is available for in-person voting at all Voter Assistance Centers We provide translated facsimile ballots in Chinese, Korean, Punjabi, Russian and Spanish for reference purposes only. You can call our Elections Office to request a facsimile translated ballot by mail.



In-person voting will take place at Voter Assistance Centers - there will be no neighborhood polling places. We will operate 12 Voter Assistance Centers throughout the County between October 31 and November 3. The locations and hours of operation are listed at yoloelections.org or in the Voter Information Guide you will receive by mail.

DID YOUR ADDRESS CHANGE? If you've interacted with the DMV since April of 2018, your voter registration information may have been inadvertently changed. It's important to confirm your voter status, political party affiliation, vote-by-mail status and information to make sure you are still registered correctly. Please check your registration at VoterStatus.sos.ca.gov and if necessary update your information at **least 15 days prior to the next election** or you may be required to vote using a provisional ballot.

Figure 6 2021 Recall Election Official Ballot Stub & Voter Information



State law requires that voters receive a ballot stub as evidence that an official ballot was issued. The California Elections Code allows counties to provide a paper ballot stub. This is your official ballot stub should you wish to keep it.

IMPORTANT MESSAGE FOR VOTE BY MAIL VOTERS

Senate Bill 152 (SB152, passed on June 28, 2021) permits the 2021 gubernatorial recall election to be an all-mail ballot election. SB152 also authorized a local government entity that previously called a special local election to consolidate that election with a gubernatorial recall election if certain conditions were met. This means every active registered voter for the September 14, 2021 California Gubernatorial Recall Election will automatically receive an official ballot in the mail. If you plan on voting in-person, please bring your official Vote by Mail packet with you to the voting location. Call the Yolo County Elections Office at (530) 666-8133 or toll-free in CA at (800) 649-9943 to answer any questions you may have. You can visit www.yolocounty.org to locate voting and official ballot drop box locations.

To ensure your ballot is counted correctly, turn this sheet over.



Voter Survey



Register to Vote



Visit yoloelections.org



Do you want your ballot to be counted? WE DO!

Make sure you do the following:

- 1. SIGN YOUR ENVELOPE.** You must sign your return envelope, or your ballot cannot be counted. State law requires the Yolo County Elections Office to match the signature in your voter record to the signature on the outside of your return envelope before we count your ballot.
- 2. SIGNATURE AUTHORIZING ANOTHER TO RETURN YOUR BALLOT.** While most mail ballot voters return their voted ballots by mail, you may choose to return your ballot in person to the Yolo County Elections Office in Woodland or to any official ballot drop off location in California. You may also authorize certain people to return your ballot, but you must sign your envelope where required and the designee must sign the authorization section on the return envelope, or we cannot accept your ballot from that person.
- 3. PLAN TO HAVE YOUR BALLOT ARRIVE ON TIME.** If you hand-deliver your ballot, it must be received by the Yolo County Elections Office in Woodland or at any official ballot drop box location in California no later than 8:00 PM on Election Day for it to count. If you return your ballot by mail, no postage is necessary. Make sure to check with your local post office for current days/hours of operation, as your ballot must be postmarked on or before Election Day and received within 7 days after Election Day or it cannot be counted. We suggest you mail your ballot at your earliest convenience.

For more information, visit www.yoloelections.org and/or call (530) 666-8133.

Figure 7 2021 Recall Election Voter Alert Information Household Notice Postcard

YOLO COUNTY ELECTIONS OFFICE
625 COURT STREET, SUITE B-05
WOODLAND, CA 95695

IMPORTANT CHANGES TO THE RECALL ELECTION



A ballot for the September 14, 2021 California Gubernatorial Recall Election will be mailed to all active voters beginning August 16, 2021. No request is necessary.



No postage is necessary to return your ballot by mail. You may also return your ballot to any of our secure Ballot Drop Boxes. These locations can be found at yoloelections.org and in the Voter Information Guide that will be mailed to you at the end of August.



Please check your registration information at VoterStatus.sos.ca.gov to that you are registered and that your ballot will arrive at your correct address.



Sign up at WheresMyBallot.sos.ca.gov to track your ballot and receive notifications on the mailing and counting of your ballot through automatic email, text or voice call notifications.



Our Remote Accessible Vote-by-Mail (RAVBM) system provides an accessible option for voters to receive their ballots digitally at home and mark them independently and privately before returning them to us. Visit yoloelections.org or call us for more information. For the September 14, 2021 Election, any registered voter may use the RAVBM option.



Language assistance is available for in-person voting at all Voter Assistance Centers. We provide translated facsimile ballots in Chinese, Korean, Punjabi, Russian and Spanish for reference purposes only. You can call our Elections Office to request a facsimile translated ballot by mail.



In-person voting will take place at Voter Assistance Centers - there will be no neighborhood polling places. We will operate 13 Vote Assistance Centers throughout the county between September 11 and September 14. The locations and hours of operation are listed at yoloelections.org or in the Voter Information Guide you will receive by mail.

DID YOUR ADDRESS CHANGE? If you've interacted with the DMV since April of 2018, your voter registration information may have been inadvertently changed. It's important to your voter status, political party vote-by-mail status and information to make sure you are still registered correctly. Please check your registration at VoterStatus.sos.ca.gov and if necessary update your information **at least 15 days prior to the next election** or you may be required to vote using a provisional ballot.

(800) 649-9943 or (530) 666-8133 yoloelections.org elections@yolocounty.org

Figure 8 Nov 2020 General Election Billboard messaging

**ARE YOU ELECTION READY?
VOTE SAFE YOLO!**

Vote-by-Mail
A ballot will be mailed to all active registered voters

Ballot Drop Box
12 Locations Available
October 5 - November 3

Early In-Person
12 Locations Open
October 31 - November 3

For More Information:
(530) 666-8133
elections@yolocounty.org
www.yoloelections.org

**ARE YOU ELECTION READY?
VOTE SAFE YOLO!**

Vote-by-Mail
A ballot will be mailed to all active registered voters

Ballot Drop Box
12 Locations,
available October 5 - November 3

Early In-Person
12 Locations,
Open October 31 - November 3

For More Information:
(530) 666-8133
elections@yolocounty.org
www.yoloelections.org

**ARE YOU ELECTION READY?
VOTE SAFE YOLO!**

Vote-by-Mail
A ballot will be mailed to all active registered voters

Ballot Drop Box
12 Locations,
available October 5 - November 3

Early In-Person
12 Locations,
Open October 31 - November 3

For More Information:
(530) 666-8133
elections@yolocounty.org
www.yoloelections.org

**ARE YOU ELECTION READY?
VOTE SAFE WINTERS!**

Vote-by-Mail
A ballot will be mailed to all active registered voters

Ballot Drop Box
Lorenzo's Market,
Available October 5 - November 3

Early In-Person
Winters Community Center,
Open October 31 - November 3

For More Information:
(530) 666-8133
elections@yolocounty.org
www.yoloelections.org

**ARE YOU ELECTION READY?
VOTE SAFE YOLO!**

Vote-by-Mail
A ballot will be mailed to all active registered voters

Ballot Drop Box
12 Locations,
Available October 5 - November 3

Early In-Person
12 Locations,
Open October 31 - November 3

For More Information:
(530) 666-8133
elections@yolocounty.org
www.yoloelections.org

**ARE YOU ELECTION READY?
VOTE SAFE YOLO!**

Remember:

- All Active Register Voters Will Receive a Ballot in the Mail
- Ballot Drop Boxes open on Monday, October 5, 2020
- 12 Voter Assistance Centers Open on Saturday, October 31, 2020

Choose One of Three Safe Voting Options:

Vote by Mail **Ballot Drop Box** **Early In-Person Drop-off**

Register to Vote/
Check Your Voter Status:
register1ovote.ca.gov/
voterstatus.assn.ca.gov/

Track Your Ballot:
california.ballottrack.net/voter/

Figure 9 Recall Election City Specific Newspaper Advertisement Messaging

<p>By Mail Postmarked by Election Day (Tuesday, September 14, 2021) and received by the Elections Office by Tuesday, September 21, 2021</p> <p>VOTE SAFE YOLO!</p>	<p>By Ballot Drop Box City Hall Exterior - Daily 24/7 10 Royal Blvd., Davis, CA Nugget Markets (Daily, 6:00 a.m. - 10:00 p.m.) 439 Abaco Blvd., or 1414 E. Cornell Blvd., Davis, CA Wheatlax Market (Daily, 7:00 a.m. - 8:00 p.m.) 260 Lake Blvd., Davis, CA Available until 6:00 p.m. on Election Day (Tuesday, September 14, 2021)</p>	<p>In Person at any Voter Assistance Center Schedule: September 11, 2021, through Monday, September 13, 2021, from 9:00 a.m. to 6:00 p.m. Tuesday, September 14, 2021, from 7:00 a.m. to 6:00 p.m. UC Davis Memorial Union - Business Room 202 2225 S. Coast Drive, Davis Veterans Memorial Center - Multipurpose Rm. 2015 E. Main Street, Davis Montgomery Elementary School - Multipurpose Rm. 148 Dunbar Street, Davis, CA Emerson Junior High School - Inator Commons Rm. 1 1402 Dunbar Street, Davis, CA</p>	
<p>Thanks to All Official Ballot Drop Boxes of Voter Assistance Centers Host Partners: Nugget Markets, Wheatlax Market, City of Davis, Yolo County Office of Education, Davis Joint Unified School District - Montgomery Elementary and Emerson Junior High School, Veterans Memorial Center, and the University of California, Davis.</p> <p>STAY CONNECTED: Facebook @VoteCAL, Instagram @VoteCAL, Twitter @VoteCAL www.voteelection.org (530) 666-4113 election@prismcity.org</p>	<p>By Mail Postmarked by Election Day (Tuesday, September 14, 2021) and received by the Elections Office by Tuesday, September 21, 2021</p> <p>VOTE SAFE YOLO!</p>	<p>By Ballot Drop Box Lorenza's Market (Daily 7:00 a.m. - 10:00 p.m.) 101 E. Grant Avenue, Winters, CA Available until 8:00 p.m. on Election Day (Tuesday, September 14, 2021)</p>	<p>In Person at any Voter Assistance Center Schedule: September 9, 2021, through Monday, September 13, 2021, from 10:00 a.m. to 6:00 p.m. Tuesday, September 14, 2021, from 7:00 a.m. to 6:00 p.m.</p> <p>Public Safety Facility - EOC Training Rm. 782 W. Main Street, Winters</p>
<p>Thanks to All Official Ballot Drop Boxes of Voter Assistance Centers Host Partners: Lorenza's Market, City of Winters, and Winters Public Safety Facility.</p> <p>STAY CONNECTED: Facebook @VoteCAL, Instagram @VoteCAL, Twitter @VoteCAL www.voteelection.org (530) 666-4113 election@prismcity.org</p>	<p>By Mail Postmarked by Election Day (Tuesday, September 14, 2021) and received by the Elections Office by Tuesday, September 21, 2021</p> <p>VOTE SAFE YOLO!</p>	<p>By Ballot Drop Box City Hall Exterior - Daily 24/7 100 W. Capitol Avenue, West Sacramento Artega's Supermarket (Daily 8:00 a.m. - 8:00 p.m.) 180 Sacramento Avenue, West Sacramento West Sacramento Recreation Center Washdayz 6:00 a.m. - 1:00 p.m.; 3:00 p.m. - 8:00 p.m. Sawdayz 6:00 a.m. - 1:30 p.m., Sunday 12:00 p.m. - 1:30 p.m. 293 Jefferson Boulevard, West Sacramento Available until 8:00 p.m. on Election Day (Tuesday, September 14, 2021)</p>	<p>In Person at any Voter Assistance Center Schedule: September 11, 2021, through Monday, September 13, 2021, from 10:00 a.m. to 6:00 p.m. Tuesday, September 14, 2021, from 7:00 a.m. to 6:00 p.m.</p> <p>Brigancey Lakes Bookstore 3630 Scuppernon Parkway, West Sacramento Washington USD Office - Multipurpose Rm. 930 Westwood Road, West Sacramento Bryle CCT - Bryle Cafe - Multipurpose Rm. 487 Solbuck Avenue, West Sacramento</p>
<p>Thanks to All Official Ballot Drop Boxes of Voter Assistance Centers Host Partners: Artega's Starline Supermarkets, City of West Sacramento, West Sacramento Recreation Center, Brigancey Lakes Bookstore, Yolo County Office of Education, Washington Unified School District, Bryle CCT - Bryle Cafe, STAY CONNECTED: Facebook @VoteCAL, Instagram @VoteCAL, Twitter @VoteCAL www.voteelection.org (530) 666-4113 election@prismcity.org</p>	<p>By Mail Postmarked by Election Day (Tuesday, September 14, 2021) and received by the Elections Office by Tuesday, September 21, 2021</p> <p>VOTE SAFE YOLO!</p>	<p>By Ballot Drop Box Four Office Parking Lot Exterior - 24/7 720 Court Street, Woodland Raley's (Daily 6:00 a.m. - 9:00 p.m.) 140 W. Main Street, Woodland Wal-A-Dee (Daily 4:00 a.m. - 9:00 p.m.) 881 E. Olson Road, Woodland Yolo County Election Office (Weekday 6:00 a.m. - 3:00 p.m.) 615 Court Street, Suite 9-56, Woodland Available on Election Day until 6:00 p.m. on Tuesday, September 14, 2021</p>	<p>In Person at any Voter Assistance Center Schedule: September 11, 2021, through Monday, September 13, 2021, from 9:00 a.m. to 6:00 p.m. Tuesday, September 14, 2021, from 7:00 a.m. to 6:00 p.m.</p> <p>Woodland High School - Gymnasium 214 West Street, Woodland Power High School - Cafeteria 1400 Rowan Avenue, Woodland Woodland Community & Senior Center - Ballroom 3 200 East Street, Woodland</p>
<p>Thanks to All Official Ballot Drop Boxes of Voter Assistance Centers Host Partners: Ray Aip, Raley's, City of Woodland, Woodland Community and Senior Center, Yolo County Office of Education, Woodland Joint Unified School District - Woodland High School, Power High School.</p> <p>STAY CONNECTED: Facebook @VoteCAL, Instagram @VoteCAL, Twitter @VoteCAL www.voteelection.org (530) 666-4113 election@prismcity.org</p>	<p>By Mail Postmarked by Election Day (Tuesday, September 14, 2021) and received by the Elections Office by Tuesday, September 21, 2021</p> <p>VOTE SAFE YOLO!</p>	<p>By Ballot Drop Box City Hall Exterior - Daily 24/7 10 Royal Blvd., Davis, CA Nugget Markets (Daily, 6:00 a.m. - 10:00 p.m.) 439 Abaco Blvd., or 1414 E. Cornell Blvd., Davis, CA Wheatlax Market (Daily, 7:00 a.m. - 8:00 p.m.) 260 Lake Blvd., Davis, CA Available on Election Day until 8:00 p.m. on Tuesday, September 14, 2021</p>	<p>In Person at any Voter Assistance Center Schedule: September 11, 2021, through Monday, September 13, 2021, from 9:00 a.m. to 6:00 p.m. Tuesday, September 14, 2021, from 7:00 a.m. to 6:00 p.m. UC Davis Memorial Union - Business Room 202 2225 S. Coast Drive, Davis Veterans Memorial Center - Multipurpose Rm. 2015 E. Main Street, Davis Montgomery Elementary School - Multipurpose Rm. 148 Dunbar Street, Davis Emerson Junior High School - Inator Commons Rm. 1 1402 Dunbar Street, Davis, CA</p>
<p>Thanks to All Official Ballot Drop Boxes of Voter Assistance Centers Host Partners: Artega's Starline Supermarkets, Ray Aip, Lorenza's Market, Nugget Markets, Raley's, Wheatlax Market, West Sacramento, Yolo County Office of Education, School Districts, Yolo County Library, and University of California, Davis.</p> <p>STAY CONNECTED: Facebook @VoteCAL, Instagram @VoteCAL, Twitter @VoteCAL www.voteelection.org (530) 666-4113 election@prismcity.org</p>	<p>By Mail Postmarked by Election Day (Tuesday, September 14, 2021) and received by the Elections Office by Tuesday, September 21, 2021</p> <p>VOTE SAFE YOLO!</p>	<p>By Ballot Drop Box Lorenza's Market (Daily 7:00 a.m. - 10:00 p.m.) 101 E. Grant Avenue, Winters, CA Available on Election Day until 8:00 p.m. on Tuesday, September 14, 2021</p>	<p>In Person at any Voter Assistance Center Schedule: September 9, 2021, through Monday, September 13, 2021, from 10:00 a.m. to 6:00 p.m. Tuesday, September 14, 2021, from 7:00 a.m. to 6:00 p.m.</p> <p>Public Safety Facility - EOC Training Rm. 782 W. Main Street, Winters</p>
<p>Thanks to All Official Ballot Drop Boxes of Voter Assistance Centers Host Partners: Artega's Starline Supermarkets, Ray Aip, Lorenza's Market, Nugget Markets, Raley's, Wheatlax Market, Local Jurisdictions, Yolo County Office of Education, School Districts, Yolo County Library, and University of California, Davis.</p> <p>STAY CONNECTED: Facebook @VoteCAL, Instagram @VoteCAL, Twitter @VoteCAL www.voteelection.org (530) 666-4113 election@prismcity.org</p>	<p>By Mail Postmarked by Election Day (Tuesday, September 14, 2021) and received by the Elections Office by Tuesday, September 21, 2021</p> <p>VOTE SAFE YOLO!</p>	<p>By Ballot Drop Box City Hall Exterior - Daily 24/7 100 W. Capitol Avenue, West Sacramento Artega's Supermarket (Daily 8:00 a.m. - 8:00 p.m.) 180 Sacramento Avenue, West Sacramento West Sacramento Recreation Center Washdayz 6:00 a.m. - 1:00 p.m.; 3:00 p.m. - 8:00 p.m. Sawdayz 6:00 a.m. - 1:30 p.m., Sunday 12:00 p.m. - 1:30 p.m. 293 Jefferson Boulevard, West Sacramento Available on Election Day until 8:00 p.m. on Tuesday, September 14, 2021</p>	<p>In Person at any Voter Assistance Center Schedule: September 11, 2021, through Monday, September 13, 2021, from 10:00 a.m. to 6:00 p.m. Tuesday, September 14, 2021, from 7:00 a.m. to 6:00 p.m.</p> <p>Brigancey Lakes Bookstore 3630 Scuppernon Parkway, West Sacramento Washington USD Office - Multipurpose Rm. 930 Westwood Road, West Sacramento Bryle CCT - Bryle Cafe - Multipurpose Rm. 487 Solbuck Avenue, West Sacramento</p>
<p>Thanks to All Official Ballot Drop Boxes of Voter Assistance Centers Host Partners: Artega's Starline Supermarkets, Ray Aip, Lorenza's Market, Nugget Markets, Raley's, Wheatlax Market, Local Jurisdictions, Yolo County Office of Education, School Districts, Yolo County Library, and University of California, Davis.</p> <p>STAY CONNECTED: Facebook @VoteCAL, Instagram @VoteCAL, Twitter @VoteCAL www.voteelection.org (530) 666-4113 election@prismcity.org</p>	<p>By Mail Postmarked by Election Day (Tuesday, September 14, 2021) and received by the Elections Office by Tuesday, September 21, 2021</p> <p>VOTE SAFE YOLO!</p>	<p>By Ballot Drop Box Four Office Parking Lot Exterior - 24/7 720 Court Street, Woodland Raley's (Daily 6:00 a.m. - 9:00 p.m.) 140 W. Main Street, Woodland Wal-A-Dee (Daily 4:00 a.m. - 9:00 p.m.) 881 E. Olson Road, Woodland Yolo County Election Office (Weekday 6:00 a.m. - 3:00 p.m.) 615 Court Street, Suite 9-56, Woodland Available on Election Day until 6:00 p.m. on Tuesday, September 14, 2021</p>	<p>In Person at any Voter Assistance Center Schedule: September 11, 2021, through Monday, September 13, 2021, from 9:00 a.m. to 6:00 p.m. Tuesday, September 14, 2021, from 7:00 a.m. to 6:00 p.m.</p> <p>Woodland High School - Gymnasium 214 West Street, Woodland Power High School - Cafeteria 1400 Rowan Avenue, Woodland Woodland Community & Senior Center - Ballroom 3 200 East Street, Woodland</p>

Figure 10 Recall Election Bilingual Notice

VOTE

CHOOSE ONE OF THE THREE SIMPLE, SAFE AND SECURE VOTING OPTIONS:

ESCOJA UNA DE LAS TRES OPCIONES SIMPLES, SEGURAS Y PROTEJIDAS PADA VOTAR:


**BY MAIL
OFFICIAL BALLOT DROP BOX
IN-PERSON**

**POR CORREO
BUZON ELECTORAL OFICIAL
EN PERSONA**

SAFE VOTING IS BOTH, YOUR RIGHT AND YOUR RESPONSIBILITY!

Have questions? Contact Us:

Yolo County Elections Office
www.yoloelections.org
(530) 666-8133



¡VOTAR DE MANERA SEGURA ES AMBOS, SU DERECHO Y SU RESPONSABILIDAD!

¿Tiene preguntas? Comuníquese:

Oficina de Elecciones del Condado de Yolo
www.yoloelections.org
(530) 666-8133

The Yolo County Elections Office invites you to participate and represent Yolo County Voters by joining the Yolo County Elections Office Voting Accessibility Advisory Committee (VAAC) and Language Accessibility Advisory Committee (LAAC).

Interested? Contact The Yolo County Elections Office or the Outreach Specialist facilitating these committees:
elections@yolocounty.org
 (530) 666-8133
 María D. Coronel, Outreach Specialist
María.Coronel@yolocounty.org
 (530) 666-8136

La Oficina de Elecciones del Condado de Yolo le invita a participar y representar a los votantes del Condado de Yolo uniéndose al Comité Asesor de Accesibilidad al Votante (VAAC) y al Comité Asesor de Accesibilidad Lingüística (LAAC) de la Oficina de Elecciones del Condado de Yolo.

¿Interesado(a)? Comuníquese con La oficina de Elecciones del Condado de Yolo "o" la Especialista de Alcance que facilita estos comités:
elections@yolocounty.org
 (530) 666-8133
 María D. Coronel, Especialista de Alcance
María.Coronel@yolocounty.org
 (530) 666-8136




Figure 11 Recall Election Messaging Banners

YOLO COUNTY RESIDENTS VOTE!

For a Complete List of Official Ballot Drop Boxes, Voter Assistant Centers, and Latest Official Election Information

Contact Us At:
★ The Yolo County Elections Office ★
(530) 666-8133 / (916) 375-6490 / (800) 649-9943
elections@yolocounty.org
www.yoloelections.org
Facebook: @YoloACE
Instagram: @YoloCoACE
Twitter: @YoloCoACE

LOS RESIDENTES DEL CONDADO DE YOLO VOTAN!

Para una Lista Completa de Todos los Buzones Electorales Oficiales, Centros de Asistencia al Votante, E Información Electoral Oficial

Comuníquese con:
★ La Oficina de Elecciones del Condado de Yolo ★
(530) 666-8133 / (916) 375-6490 / (800) 649-9943
elections@yolocounty.org
www.yoloelections.org
Facebook: @YoloACE
Instagram: @YoloCoACE
Twitter: @YoloCoACE

YOLO COUNTY RESIDENTS VOTE!

**Try One of Three Simple, Safe & Secure Ways to Vote:
Vote-by-Mail, Drop at an Official Ballot Drop Box, Early In-Person**

Stay Informed, Contact Us At:
★ The Yolo County Elections Office ★
(530) 666-8133 / (916) 375-6490 / (800) 649-9943
elections@yolocounty.org
www.yoloelections.org
Facebook: @YoloACE
Instagram: @YoloCoACE
Twitter: @YoloCoACE

LOS RESIDENTES DEL CONDADO DE YOLO VOTAN!

**Vote Utilizando Una de las Tres Maneras Simples, Seguras & Protegidas para Votar:
Vote por Correo, Entregue su boleta en un Bozón Electoral Oficial, o En Persona los Días de Votación**

Manténgase Informado, Comuiquese con:
★ La Oficina de Elecciones del Condado de Yolo ★
(530) 666-8133 / (916) 375-6490 / (800) 649-9943
elections@yolocounty.org
www.yoloelections.org
Facebook: @YoloACE
Instagram: @YoloCoACE
Twitter: @YoloCoACE

Yolo County California Voter's Choice Act Election Administration Plan



Appendix H | Maps and Spatial Data

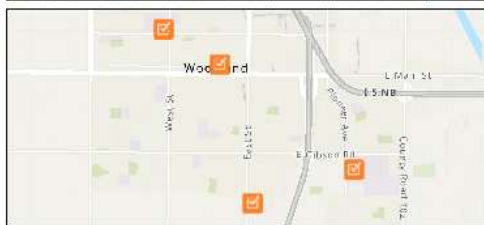
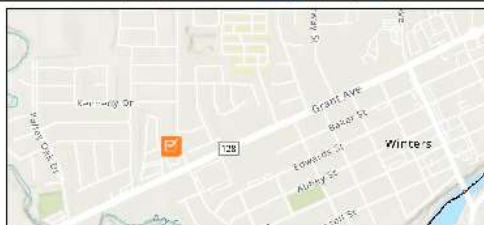
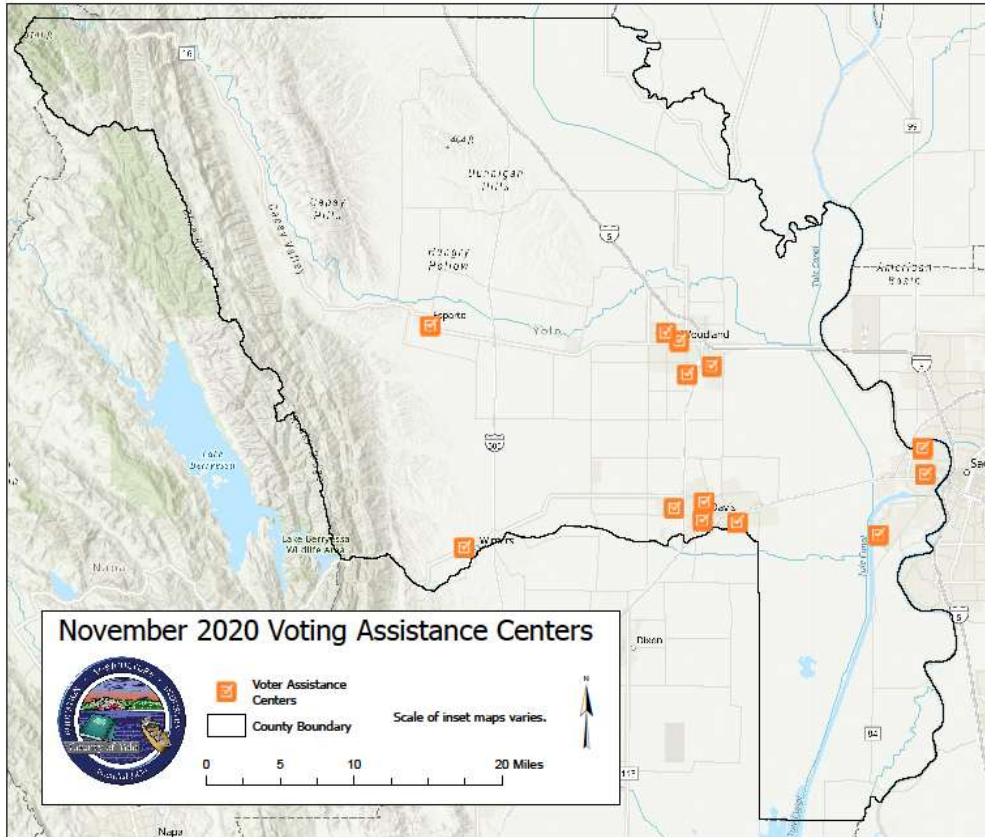
Customized maps with precincts, census tracts and other spatial analyses will be available after the ACE GIS team has completed the re-districting process in preparation for the June 7, 2022 Statewide Direct Primary Election. Credit and citations are provided for each of the maps below.

Vote Center Maps

EC §4005(a)(10)(I)(vi)(V)

Many of the locations used in the 2020 Presidential General Election and the 2021 Gubernatorial Recall Election will be used in the June 2022 Statewide Direct Primary Election. Maps will be published for each election.

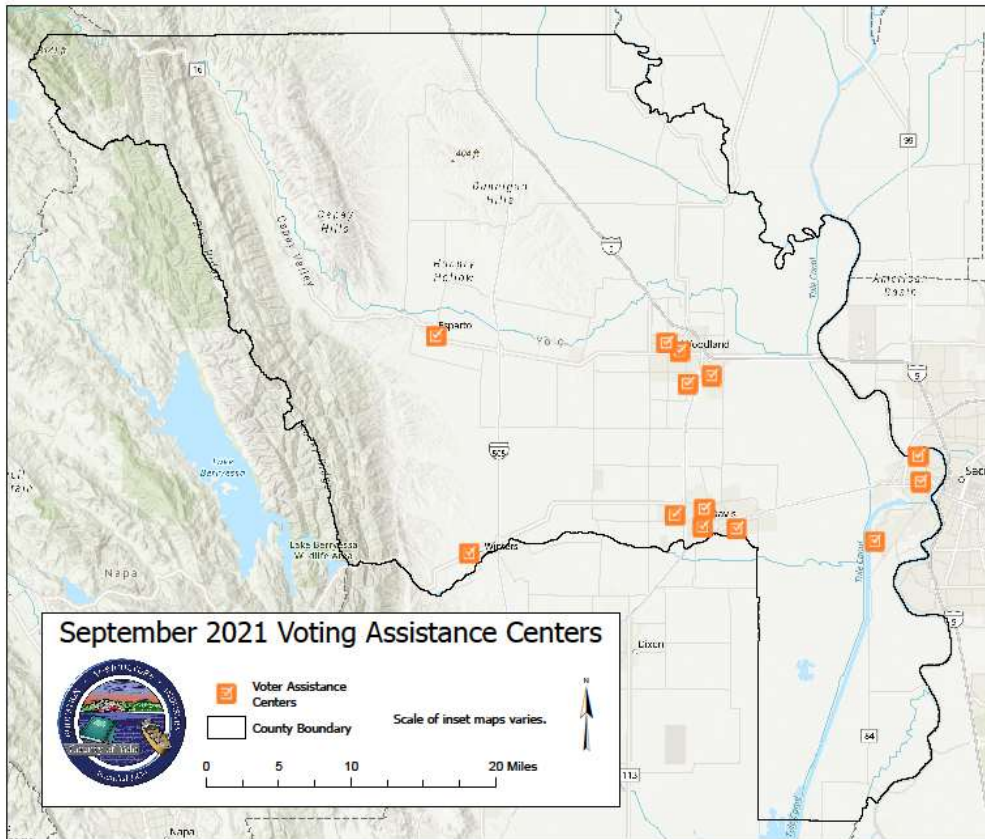
November 2020 Voter Assistance Centers



Name	Address	City	State	Zip
Emerson Junior High School - Indoor Commons Rm. 1	2121 Calaveras Ave	Davis	CA	95616
Montgomery Elementary School - Multipurpose Rm.	1441 Danbury Street	Davis	CA	95618
UC Davis Memorial Union - Garrison Room 212	225 E Quad	Davis	CA	95616
Veterans Memorial Center - Multipurpose Rm.	203 E. 14th Street	Davis	CA	95616
Esparto High School - Gymnasium	26675 Plainfield Street	Esparto	CA	95627
Bridgeway Lakes Boathouse	3650 Southport Pkwy	West Sacramento	CA	95691
Bryte CCT - Bryte Cafe - Multipurpose Rm.	637 Todhunter Avenue	West Sacramento	CA	95608
Washington USD Office - Multipurpose Rm.	930 Westacre Road	West Sacramento	CA	95691
Public Safety Facility - EOC Training Rm.	702 W. Main Street	Winters	CA	95694
Pioneer High School - Cafeteria	1400 Pioneer Avenue	Woodland	CA	95776
Woodland Community & Senior Center - Ballroom	2001 East St	Woodland	CA	95776
Woodland High School - Gymnasium	21 N. West Street	Woodland	CA	95695
Yolo County Admin. Building - Room 106	625 Court Street	Woodland	CA	95695



September 2021 Voter Assistance Centers



Name	Address	City	State	Zip
Emerson Junior High School - Indoor Commons Rm. 1	2121 Calaveras Ave	Davis	CA	95616
Montgomery Elementary School - Multipurpose Rm. 1	1441 Danbury Street	Davis	CA	95618
UC Davis Memorial Union - Garrison Room 212	225 E Quad	Davis	CA	95616
Veterans Memorial Center - Multipurpose Rm.	203 E. 14th Street	Davis	CA	95616
Esparto High School - Gymnasium	26675 Plainfield Street	Esparto	CA	95627
Bridgeway Lakes Boathouse	3650 Southport Plwy	West Sacramento	CA	95691
Bryce CTE - Bryce Cafe - Multipurpose Rm.	637 Todhunter Avenue	West Sacramento	CA	95608
Washington USD Office - Multipurpose Rm.	930 Westacre Road	West Sacramento	CA	95691
Public Safety Facility - EOC Training Rm.	702 W. Main Street	Winters	CA	95694
Pioneer High School - Cafeteria	1400 Pioneer Avenue	Woodland	CA	95776
Woodland Community & Senior Center - Ballroom 3	2001 East St	Woodland	CA	95776
Woodland High School - Gymnasium	21 N. West Street	Woodland	CA	95695
Yolo County Admin. Building - Room 106	625 Court Street	Woodland	CA	95695

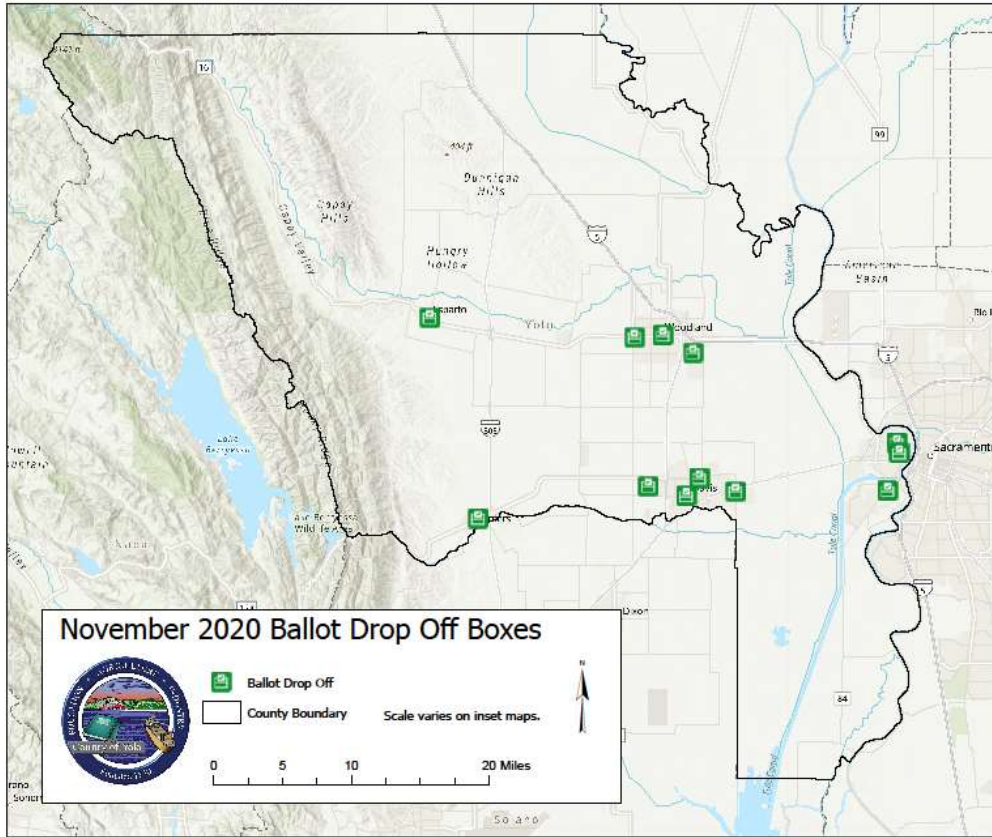


Ballot Drop Box Maps

EC §4005(a)(10)(I)(vi)(V)

Many of the locations used in the 2020 Presidential General Election and the 2021 Gubernatorial Recall Election will be used in the June 2022 Statewide Direct Primary Election. Maps will be published for each election.

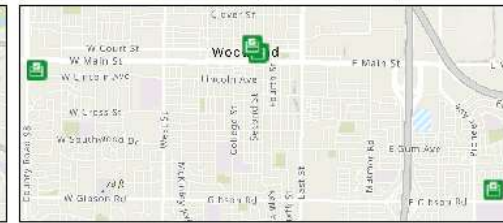
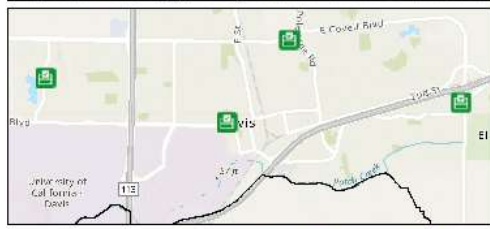
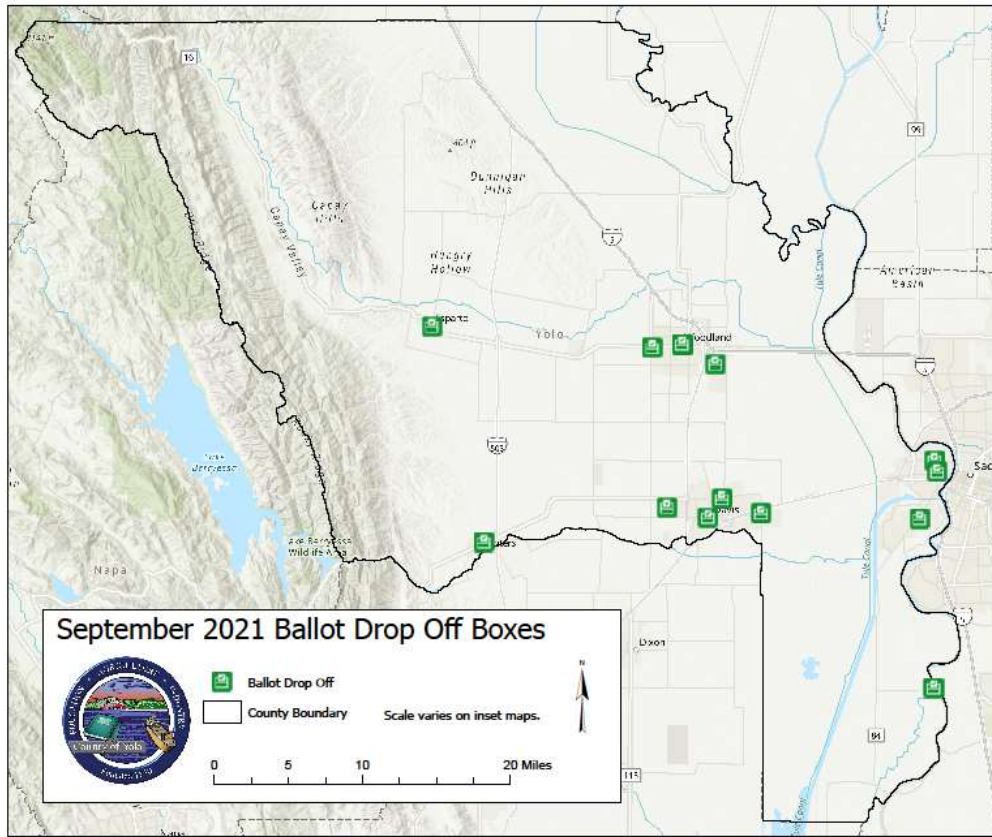
November 2020 Official Ballot Drop Boxes



Name	Address	City	State	Zip
Davis City Hall	23 Russell Boulevard	Davis	CA	95616
Nugget Market	409 Mace Boulevard	Davis	CA	95618
Nugget Market	1414 E. Covell Boulevard	Davis	CA	95616
Westlake Market	1260 Lake Boulevard	Davis	CA	95616
Esparto Regional Library	17065 Yolo Avenue	Esparto	CA	95627
Arteaga's Starlite Supermarket	940 Sacramento Avenue	West Sacramento	CA	95605
Nugget Market	2000 Town Center Plaza	West Sacramento	CA	95691
West Sacramento City Hall	1110 W. Capitol Avenue	West Sacramento	CA	95691
Lorenzo's Market	121 E Grant Ave	Winters	CA	95694
Bel Air	1885 E. Gibson Road	Woodland	CA	95776
Post Office Parking Lot	720 Court Street	Woodland	CA	95695
Raley's	367 W. Main Street	Woodland	CA	95695



September 2021 Official Ballot Drop Boxes



Name	Address	City	State	Zip
Clarksburg Library	52915 Netherlands Ave	Clarksburg	CA	95612
Davis City Hall	23 Russell Blvd	Davis	CA	95616
Nugget Market	409 Mace Blvd	Davis	CA	95618
Nugget Market	1414 E. Covell Blvd	Davis	CA	95616
Westlake Market	1260 Lake Blvd	Davis	CA	95616
Esparto Regional Library	17065 Yolo Ave	Esparto	CA	95627
Arteaga's Starlite Supermarket	940 Sacramento Ave	West Sacramento	CA	95605
West Sacramento City Hall	1110 W. Capitol Ave	West Sacramento	CA	95691
West Sacramento Recreation Center	2801 Jefferson Blvd	West Sacramento	CA	95691
Lorenzo's Market	121 E Grant Ave	Winters	CA	95694
Bel Air	1885 E. Gibson Rd	Woodland	CA	95776
Post Office Parking Lot	720 Court St	Woodland	CA	95695
Raley's	367 W. Main St	Woodland	CA	95695
Yolo County Elections Office, Room B-05	625 Court St	Woodland	CA	95695

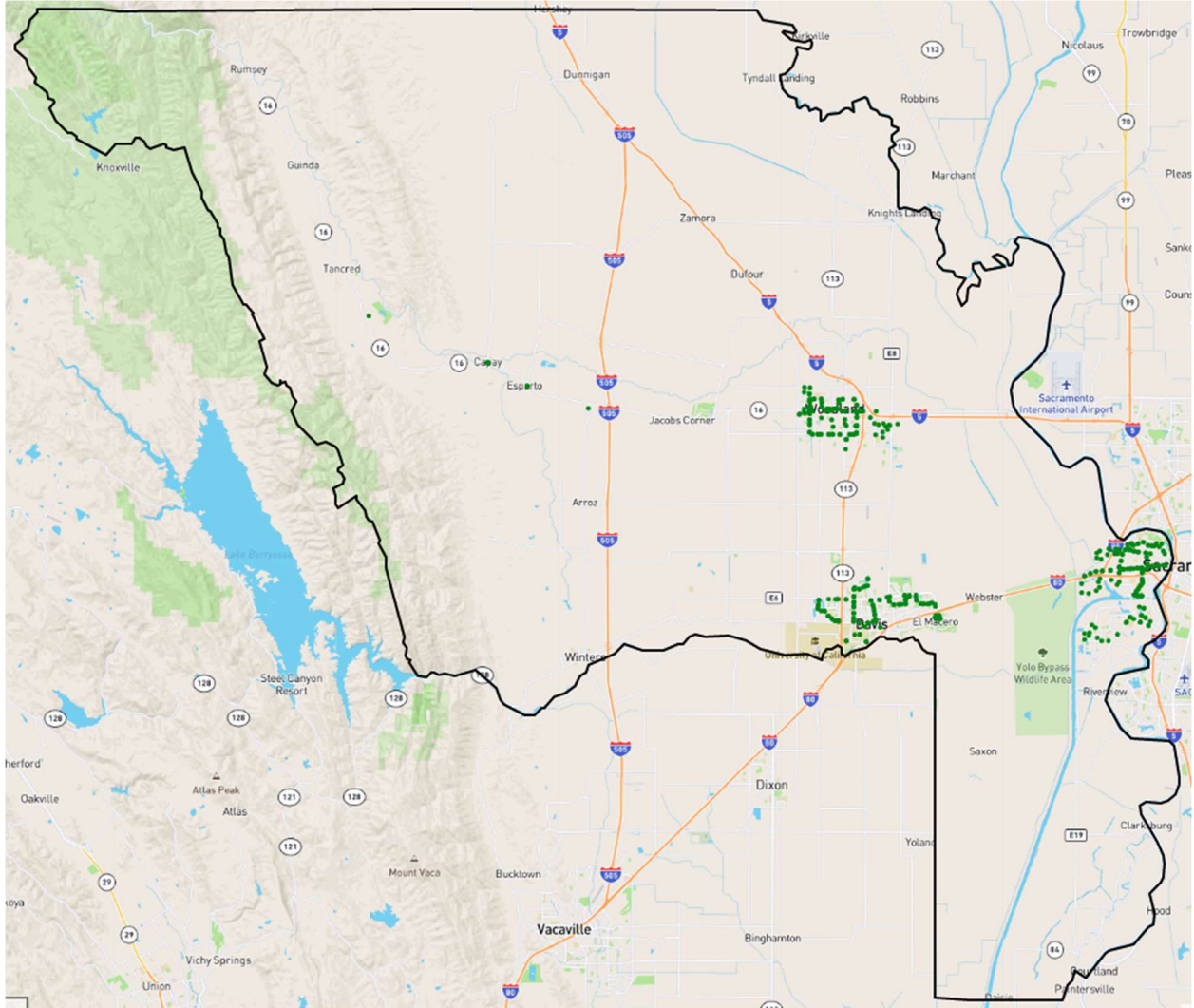


Public Transit Routes

The transit map screen shots came from: <https://ca.cidsitingtool.org/>.

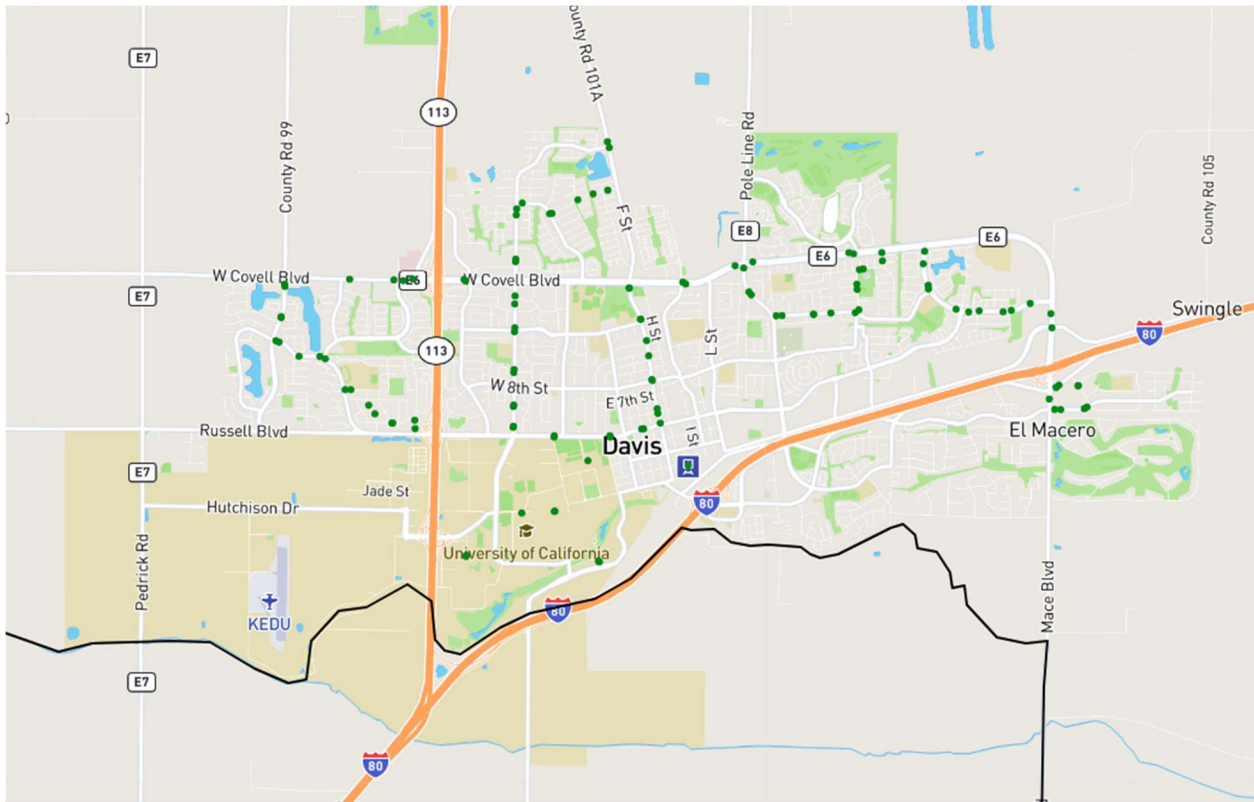
Transit Stops

Countywide



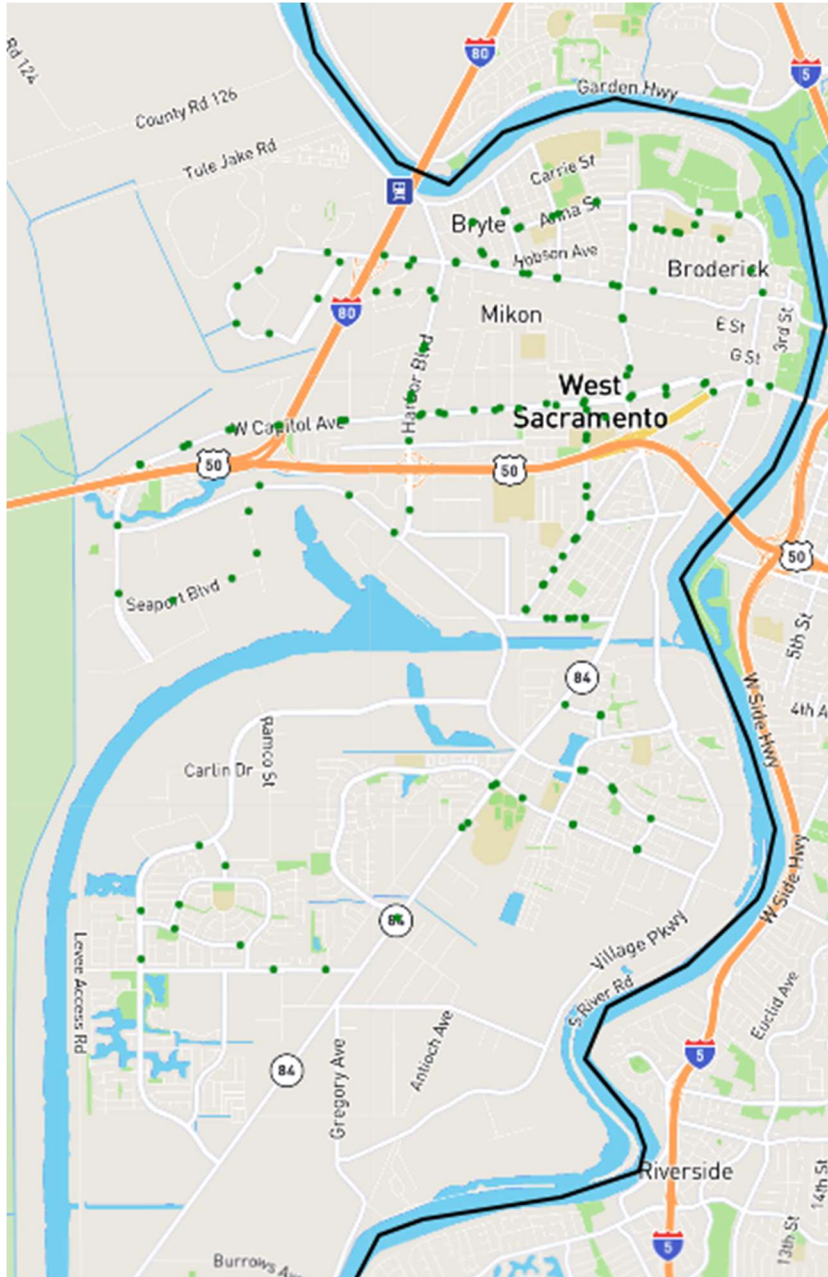
City of Davis

● Transit Stops



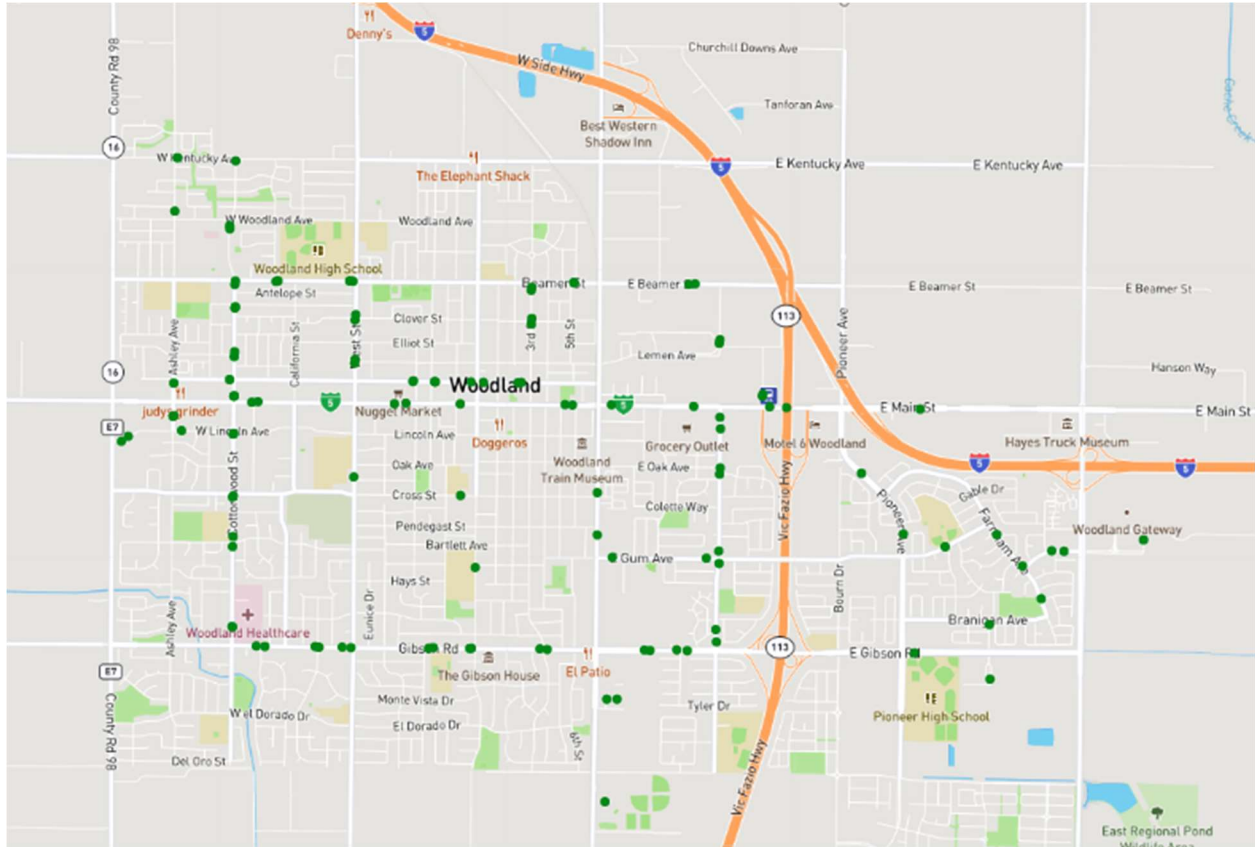
City of West Sacramento

● Transit Stops



City of Woodland

● Transit Stops



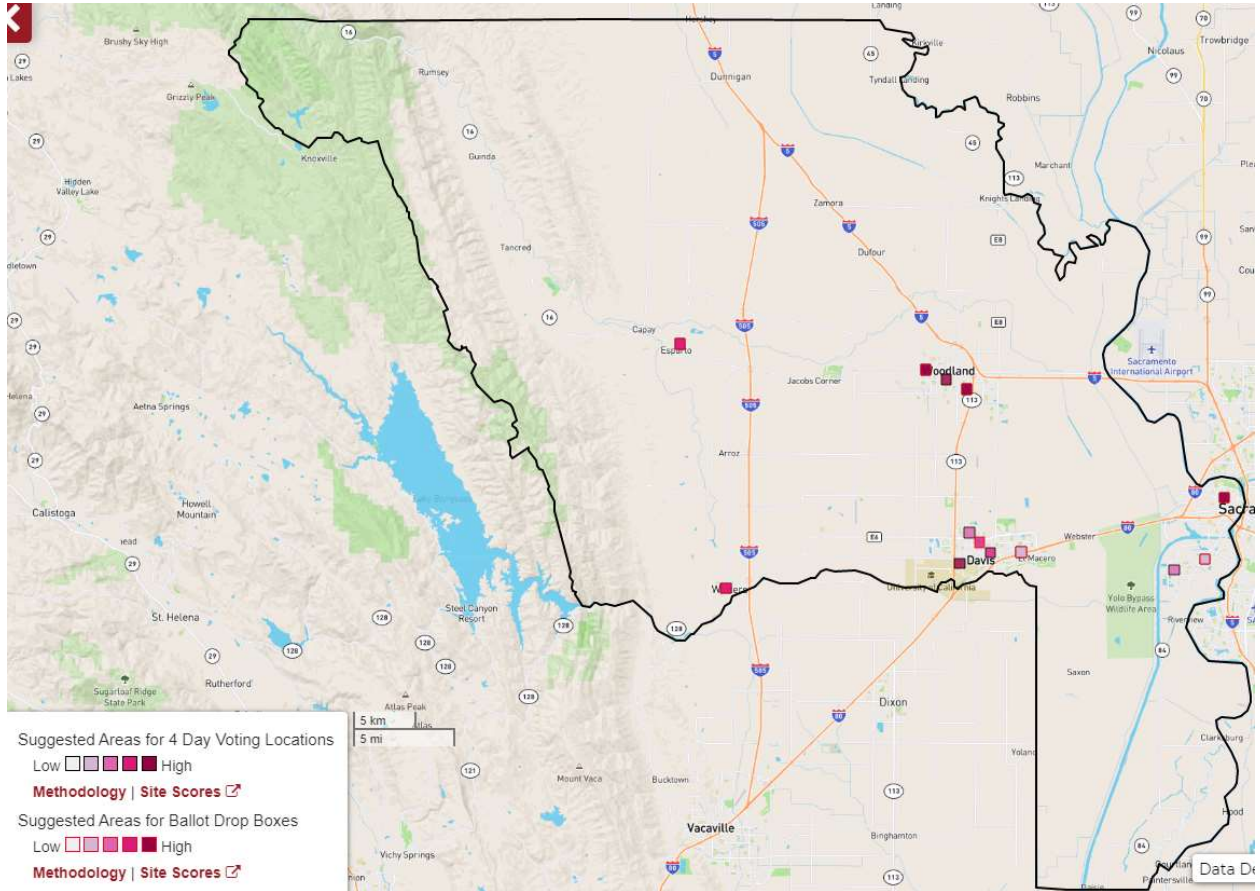
Unincorporated

● Transit Stops



Center for Inclusive Democracy Maps

Maps from the Center for Inclusive Democracy (CID) are derived from an online tool. The map below uses the "siting tool" and only shows SUGGESTED VOTE CENTER AND DROP BOX LOCATIONS.

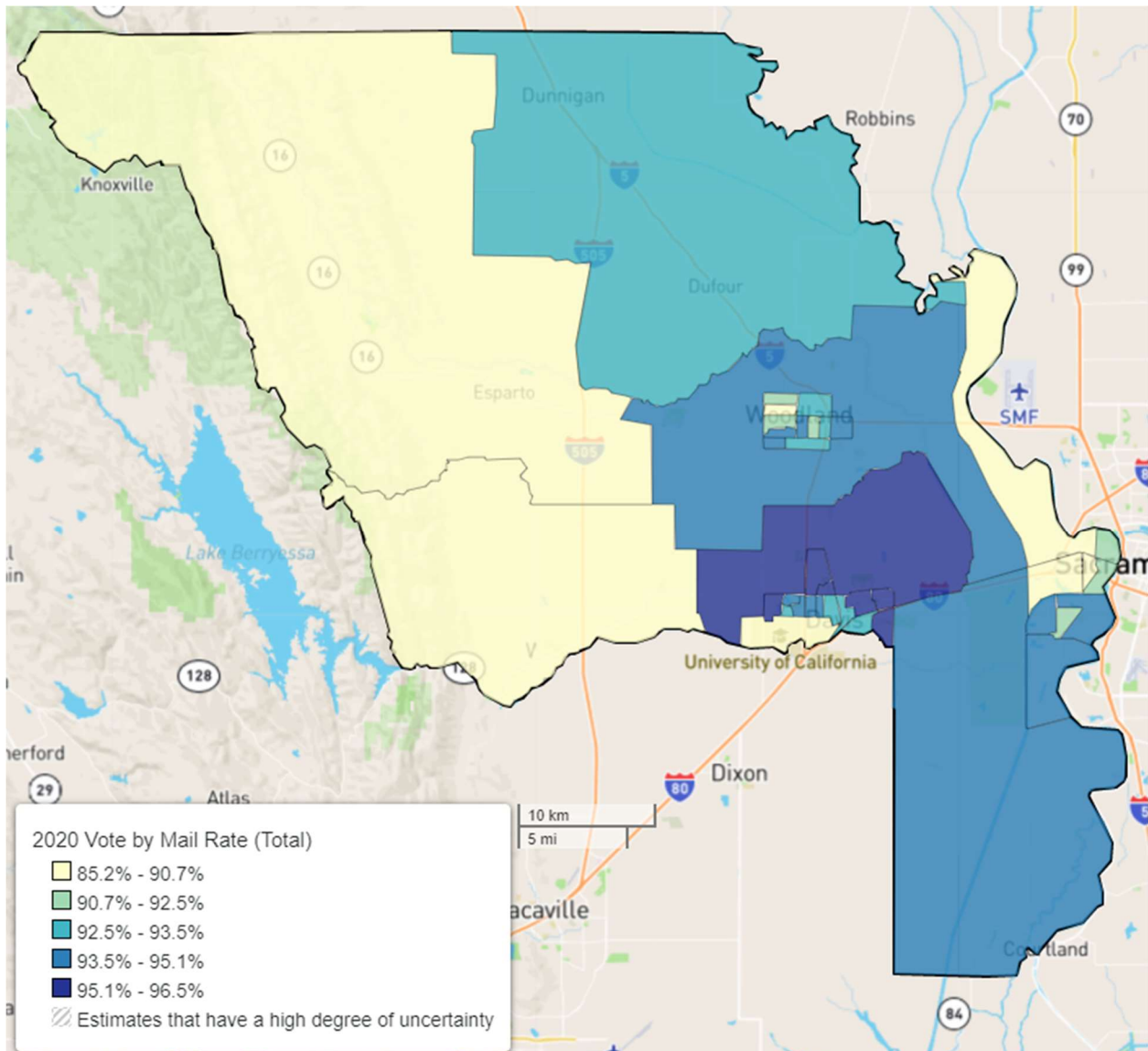


<https://ca.cidsitingtool.org/county.html?county=113>

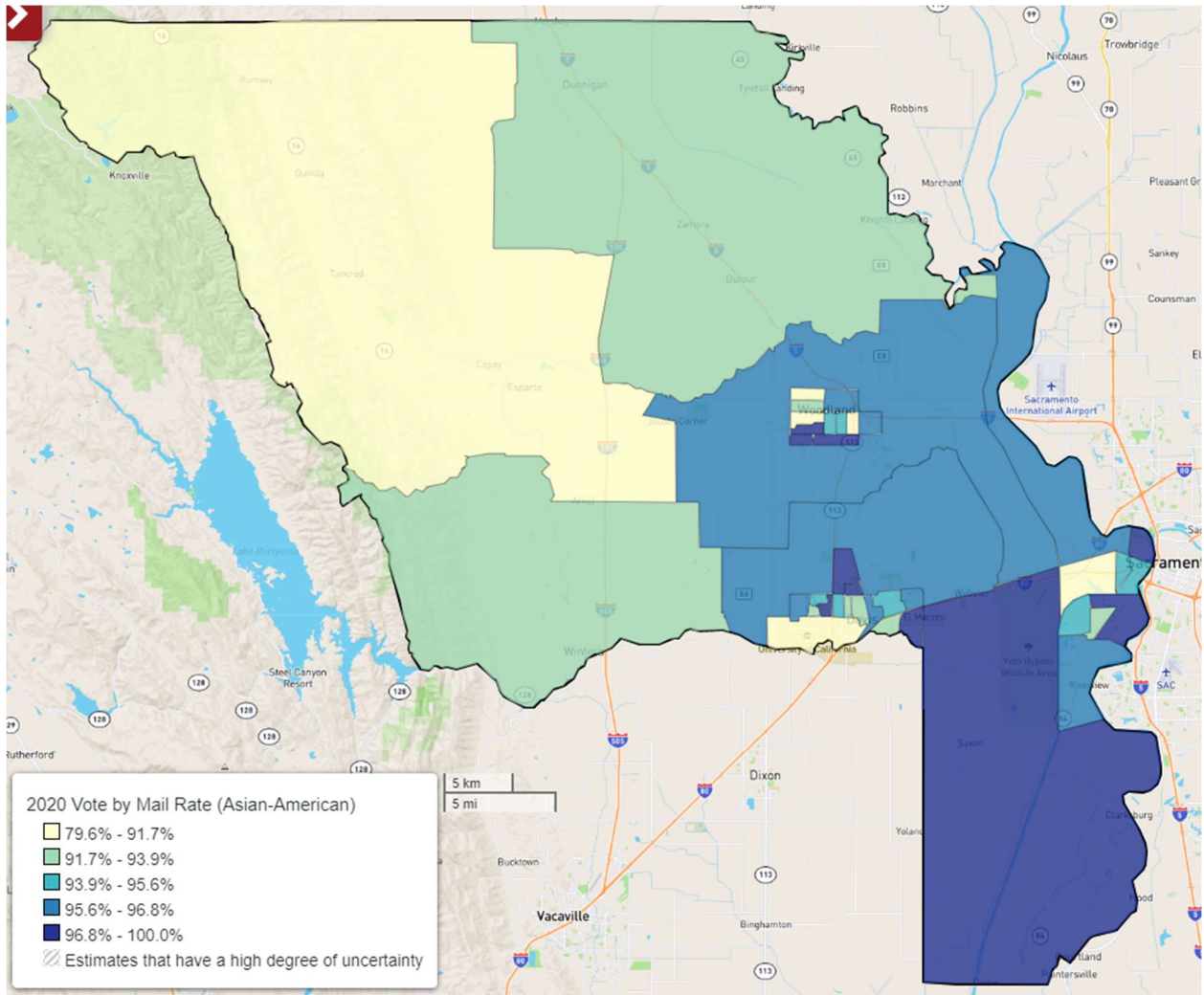
Areas with Low Vote by Mail Usage

The CID siting tool also has maps showing a visualization of demographic and election related data by census tract. Some of the data are from the 2010 Census others from the American Community Survey 5-year Estimate (2015-2019). YCE will also prepare maps about vote-by-mail ballot usage by precinct or heat map. (not shown here).

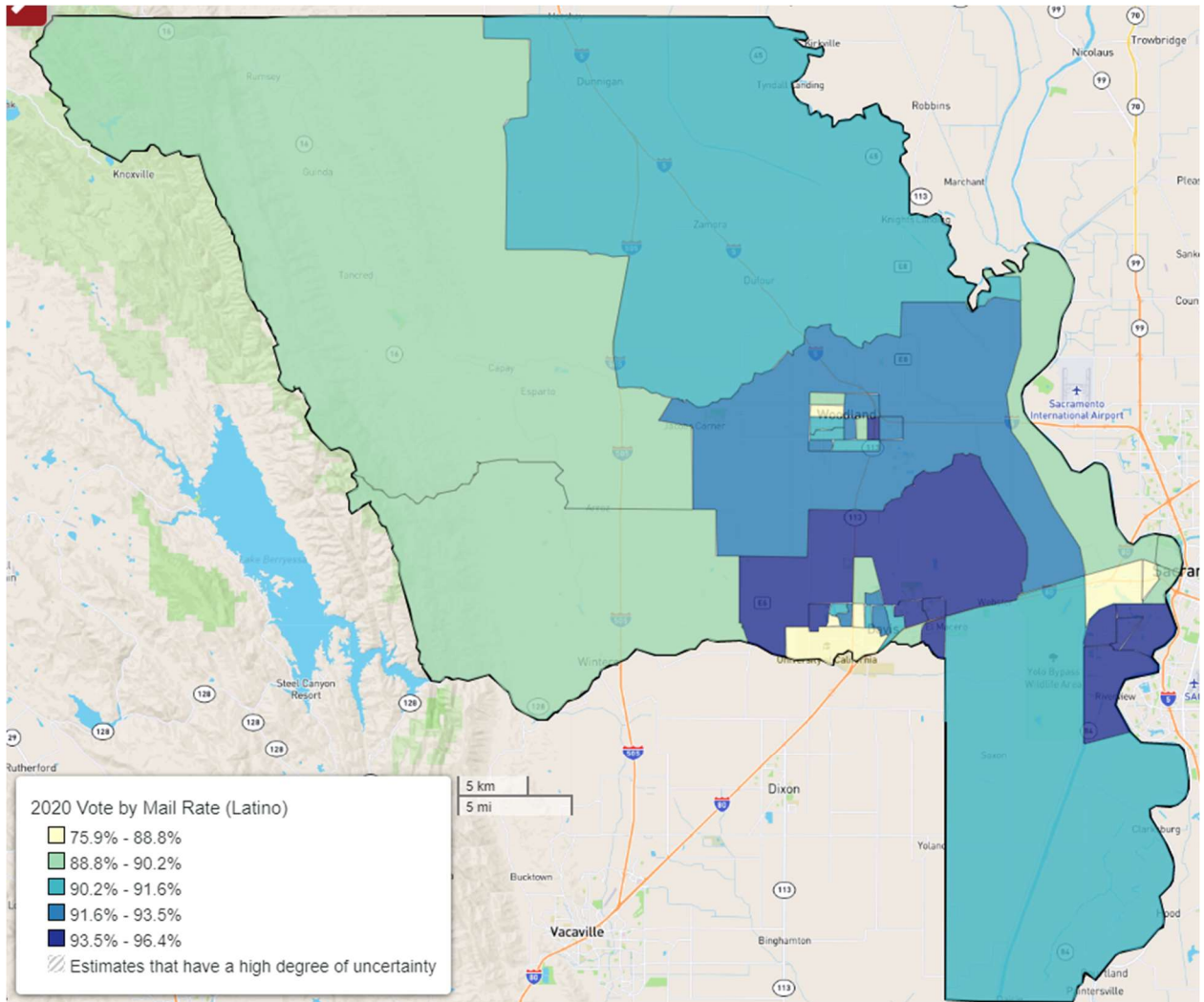
2020 Vote-by-Mail Rate - Total



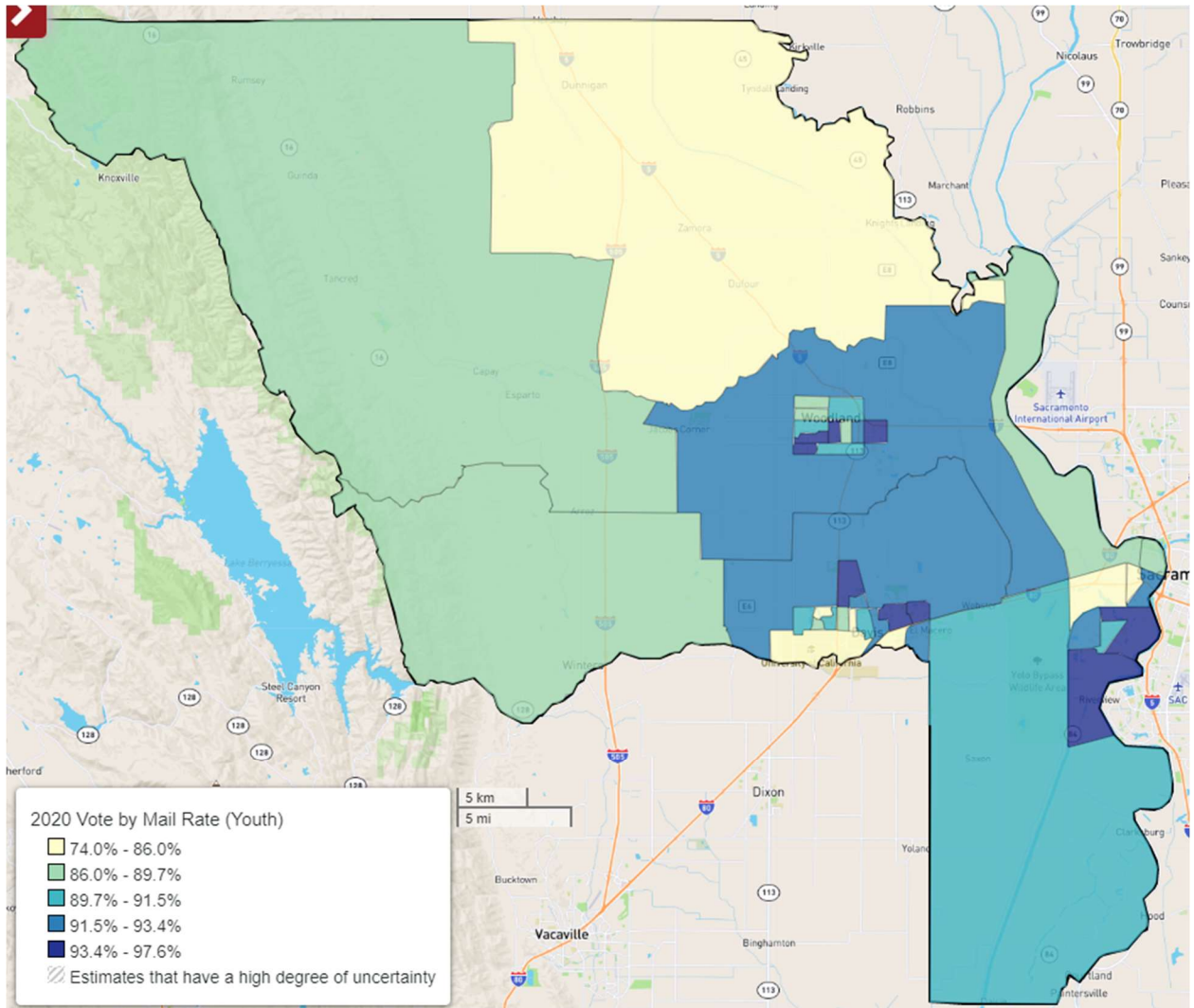
2020 Vote-by-Mail Rate – Asian-American



2020 Vote-by-Mail Rate – Latino



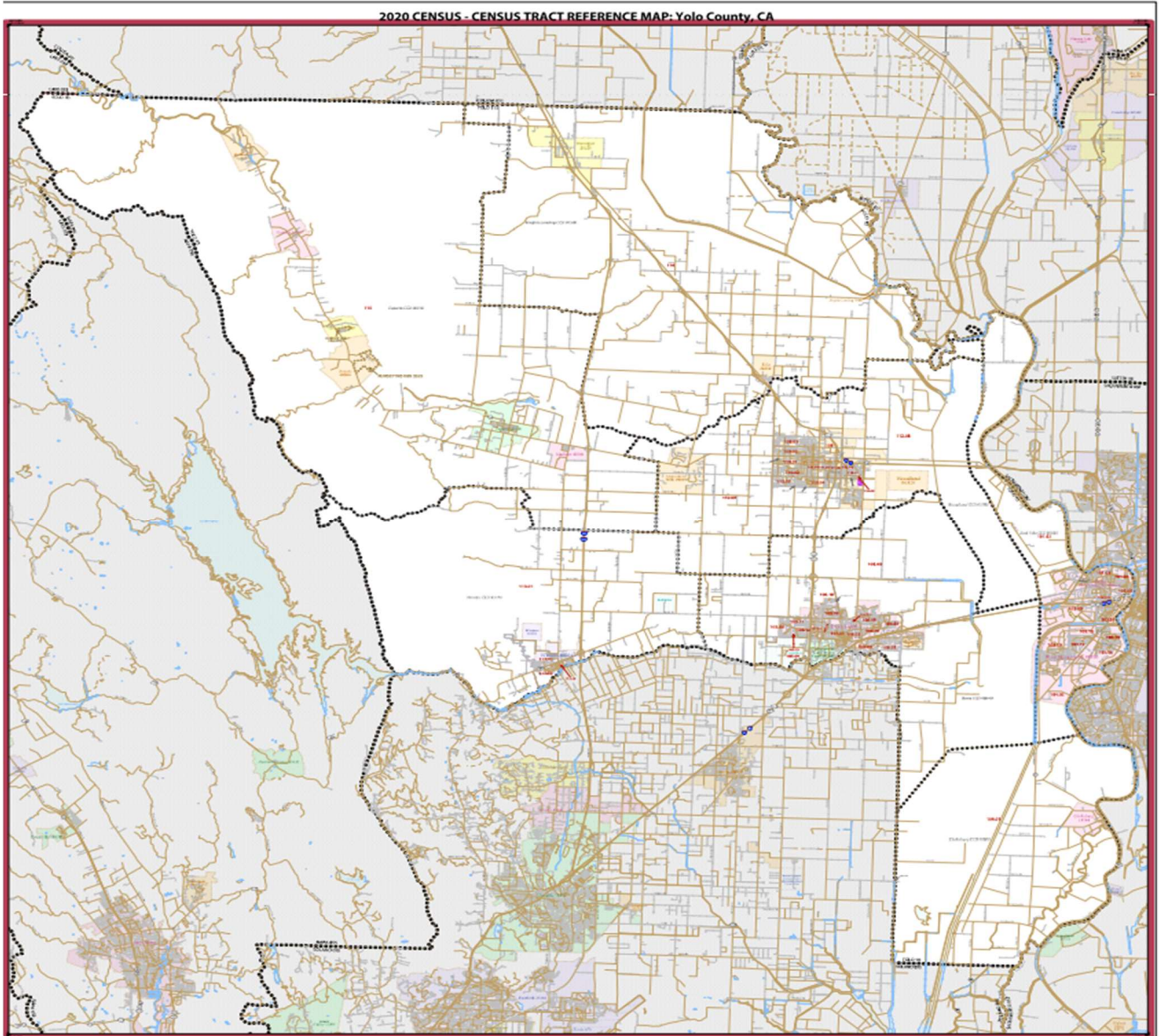
2020 Vote-by-Mail Rate – Youth



Spatial Analysis of County Demographics

Much of the data available related to the siting requirements of Vote Centers and Ballot Drop Boxes is parsed by census tract. Some of the data related to the VCA requirements are in tables. The tables reference census tracts. Below is a 2020 Census Tract Reference Map for Yolo County.

https://www2.census.gov/geo/maps/DC2020/PL20/st06_ca/censustract_maps/c06113_yolo/DC20CT_C06113.pdf



Language Minority Communities

EC §4005(a)(10)(I)(i)(V)

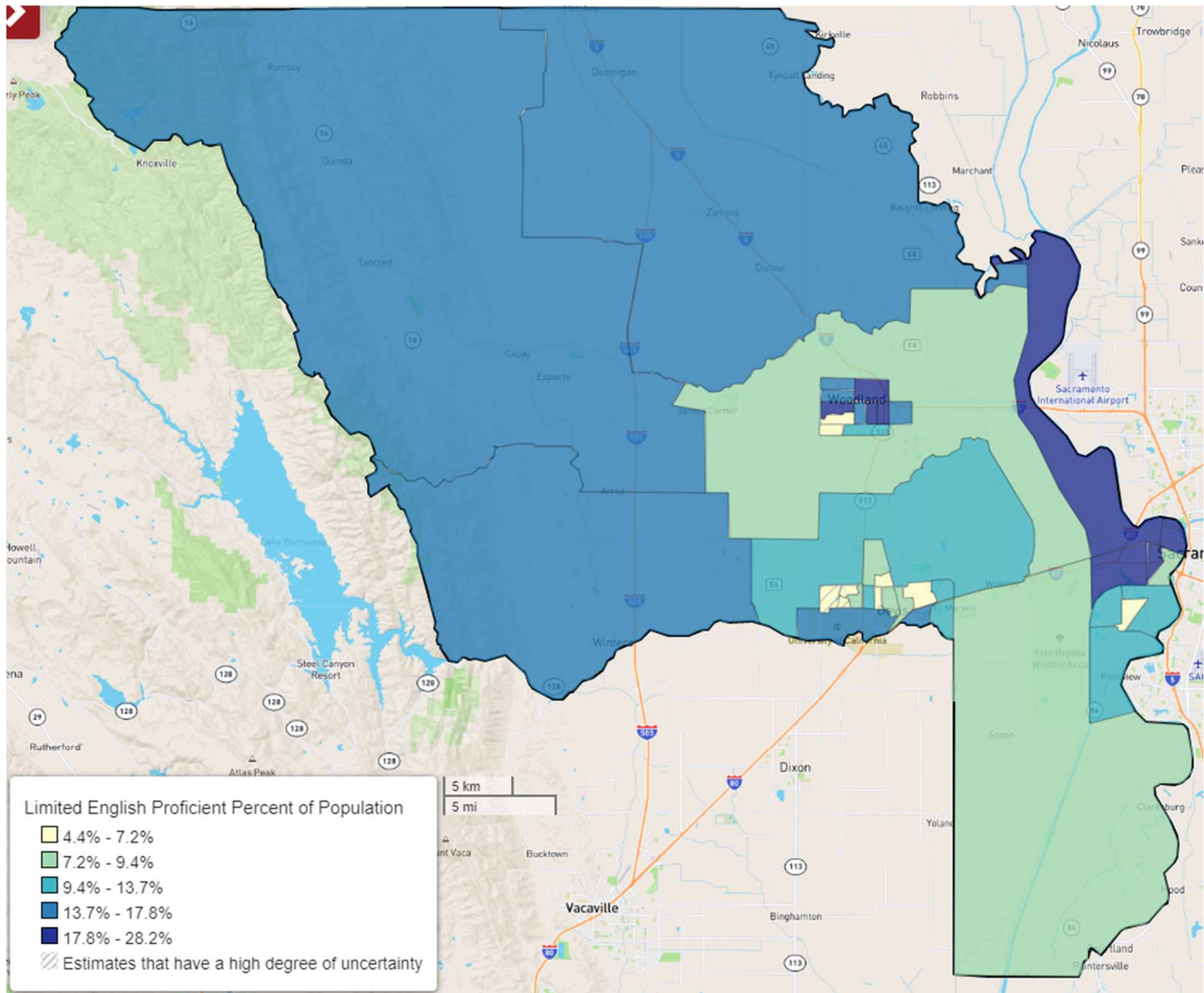
As of 2021, the Secretary of State has not provided the specific maps for Yolo County language minority communities. Due to our investment in outreach and understanding of our communities, YCE is aware of the location and the needs of minority language groups in Yolo County. Below is a table showing 2019 ACS data by census tract for limited English proficiency (LEP) population.

Table 23 Census Tracts and LEP Households

Census Tract	% of Households that are LEP			
	Spanish language	Other Indo-European languages	Asian and Pacific Island languages	Other Languages
Census Tract 101.01	6.62%	5.69%	0.97%	0.00%
Census Tract 101.02	7.17%	9.04%	0.68%	0.00%
Census Tract 102.01	3.01%	0.00%	0.00%	0.00%
Census Tract 102.03	8.13%	0.54%	2.06%	0.00%
Census Tract 102.04	8.46%	4.54%	0.00%	0.43%
Census Tract 103.02	0.00%	0.80%	2.58%	0.00%
Census Tract 103.10	0.50%	2.06%	1.73%	0.00%
Census Tract 103.12	1.11%	0.32%	0.32%	0.00%
Census Tract 104.01	0.61%	0.50%	1.67%	0.00%
Census Tract 104.02	1.17%	0.00%	0.55%	0.00%
Census Tract 105.01	0.00%	0.73%	12.12%	0.00%
Census Tract 105.05	2.47%	0.00%	2.96%	0.00%
Census Tract 105.08	0.00%	0.50%	0.90%	0.00%
Census Tract 105.09	0.00%	0.00%	2.37%	0.00%
Census Tract 105.10	0.00%	0.00%	1.97%	0.00%
Census Tract 105.11	0.00%	0.00%	5.06%	0.00%
Census Tract 105.12	0.00%	0.32%	2.86%	0.00%
Census Tract 105.13	0.00%	0.81%	0.81%	0.00%
Census Tract 106.02	0.71%	0.59%	6.47%	0.00%
Census Tract 106.05	0.00%	0.69%	2.34%	0.00%
Census Tract 106.06	0.53%	0.00%	1.57%	0.00%
Census Tract 106.07	0.25%	0.63%	6.60%	0.00%
Census Tract 106.08	2.54%	0.44%	4.14%	0.50%
Census Tract 107.01	1.38%	0.00%	1.71%	0.00%
Census Tract 107.03	0.00%	0.42%	3.17%	0.00%
Census Tract 107.04	0.00%	0.00%	1.59%	0.23%
Census Tract 108	13.44%	0.00%	0.00%	0.45%

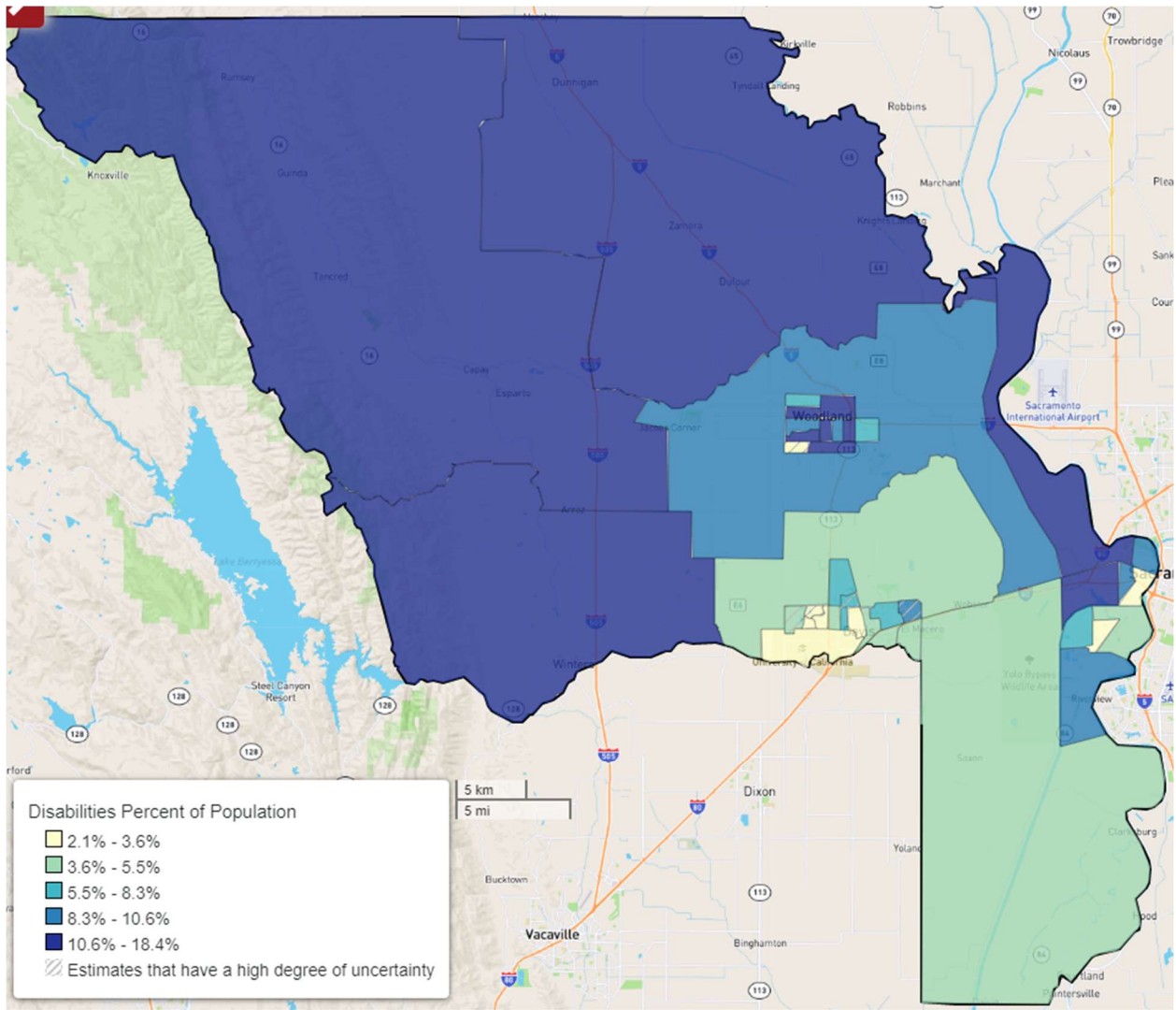
Census Tract	% of Households that are LEP			
	Spanish language	Other Indo-European languages	Asian and Pacific Island languages	Other Languages
Census Tract 109.01	6.56%	0.00%	0.00%	0.00%
Census Tract 109.02	3.43%	0.00%	2.16%	0.00%
Census Tract 110.01	11.25%	0.44%	0.73%	0.00%
Census Tract 110.02	2.00%	0.00%	0.00%	0.00%
Census Tract 111.01	6.84%	0.00%	0.00%	0.00%
Census Tract 111.02	6.22%	3.11%	0.00%	0.00%
Census Tract 111.03	1.84%	1.17%	0.00%	0.00%
Census Tract 112.03	0.00%	0.00%	0.00%	0.00%
Census Tract 112.04	3.73%	0.00%	0.59%	0.00%
Census Tract 112.05	4.75%	1.51%	0.50%	0.00%
Census Tract 112.06	4.02%	0.00%	2.62%	0.00%
Census Tract 113	6.44%	0.00%	0.00%	0.00%
Census Tract 114	4.87%	0.00%	1.02%	0.00%
Census Tract 115	4.67%	0.00%	0.00%	0.00%

The CID siting tool does not break down limited English proficiency by language; however, the map below shows the county by percent of the total population who are LEP.



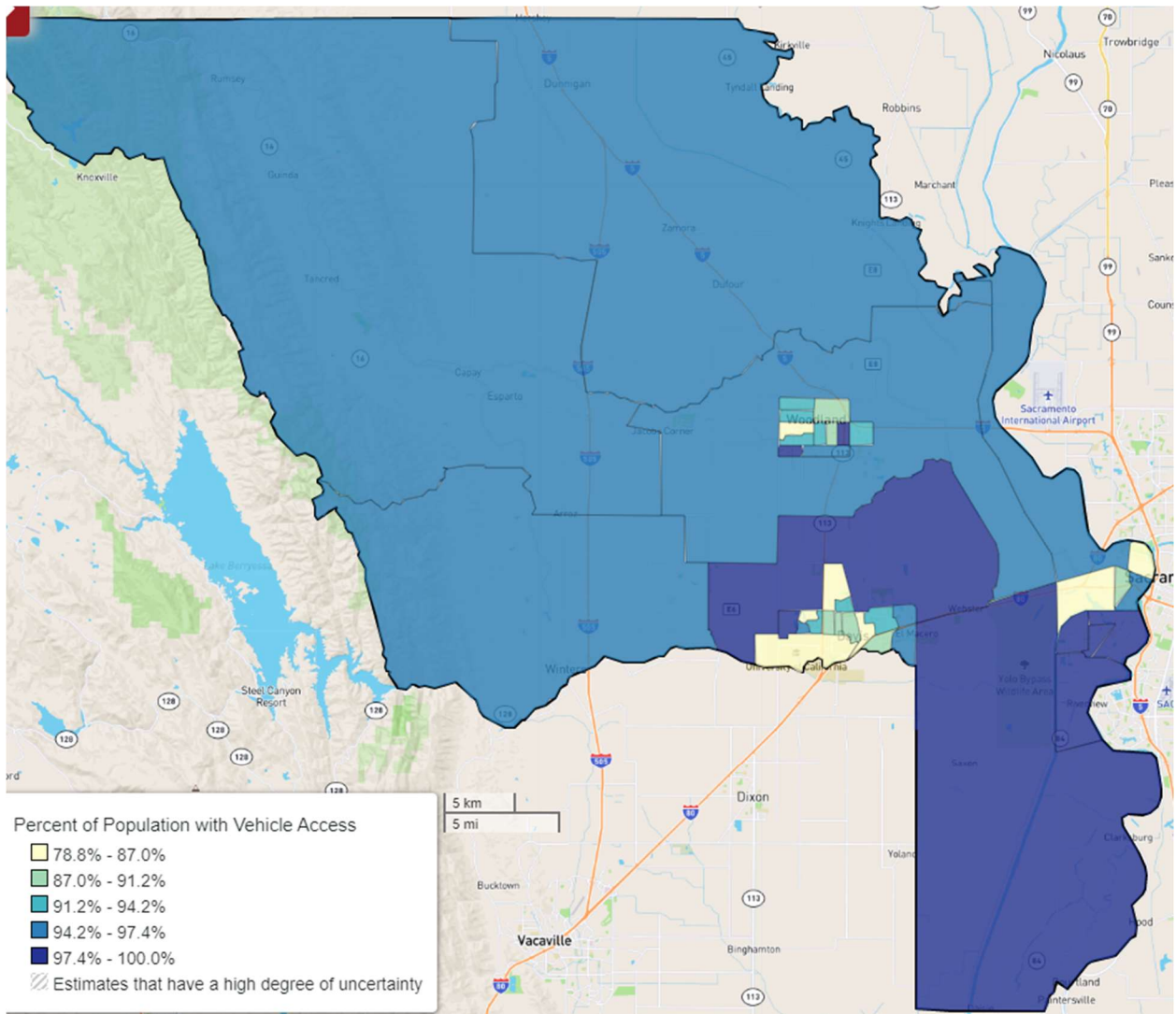
Individuals Ages 18 and over with Disabilities

The CID map below shows the percent of the population reporting as disabled by census tract from the American Community Survey 5-Year Estimate (2005-2019).



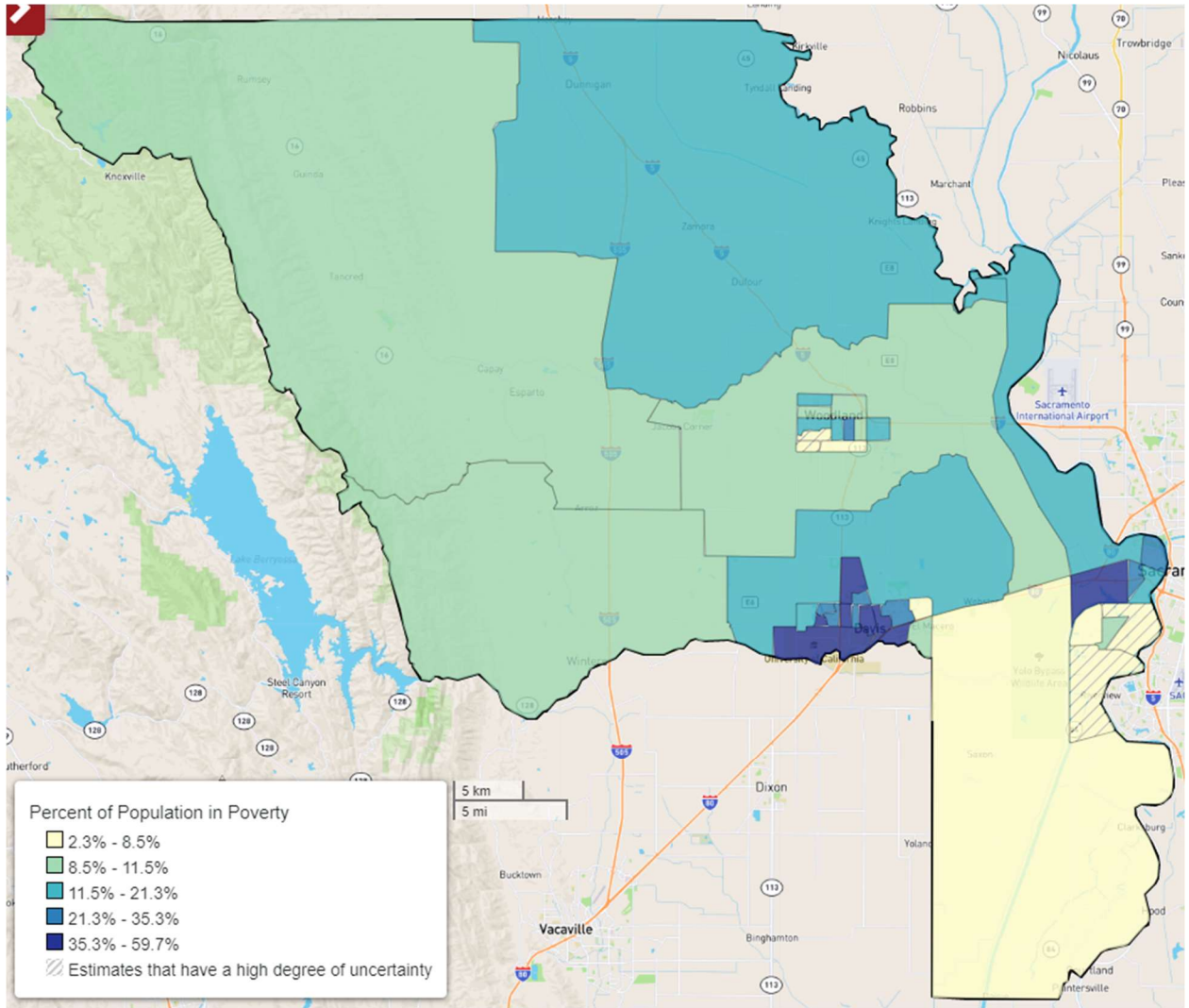
Households without Vehicles

The CID map below shows percent of the population with low access to vehicles by census tract from the American Community Survey 5-Year Estimate (2015-2019).



Individuals Ages 18 and over Living in Poverty

The CID map below shows percent of the population in poverty by census tract from the American Community Survey 5-Year Estimate (2015-2019).



Eligible Residents Who Are Not Yet Registered to Vote

The CID map below shows percent of the population who are eligible to vote but are not registered. It is displayed by census tract.

